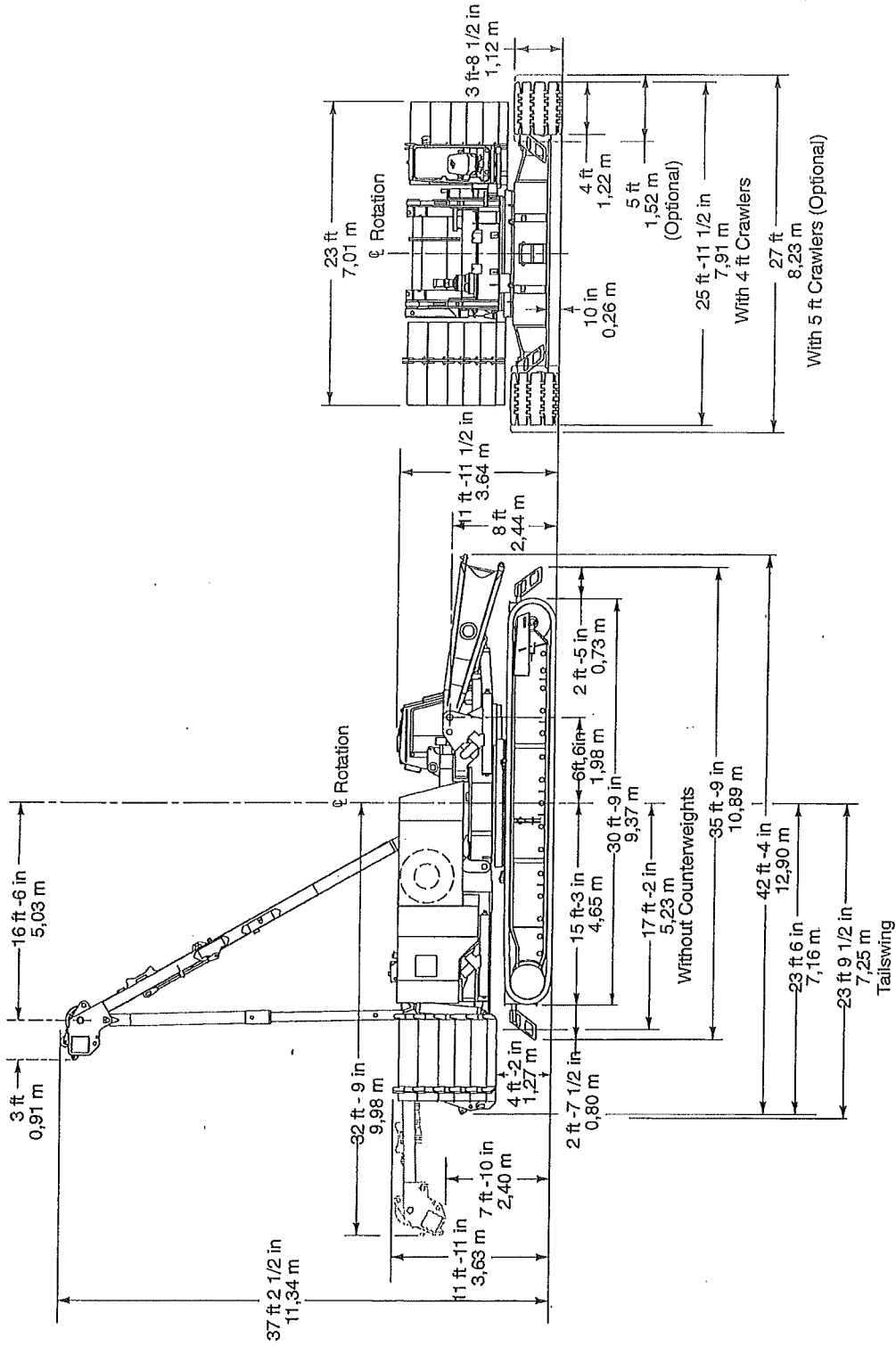


OUTLINE DIMENSIONS

Standard Crane (Series 3 Counterweight Arrangement Shown)





# Liftcrane Boom Capacities

# 2250 SERIES 3

**Boom No. 44 With Heavy Lift Top**  
**249,200 Lb. Crane Counterweight**  
**120,000 Lb. Carbody Counterweight**  
**Crawler Machine on a Static Barge**  
**0 Degree thru 3 Degree Static Machine List**  
**No Travel - 360 Degree Rating**

**LIFTING CAPACITIES:** Lifting capacities are for a crawler machine when operating on a static barge. Machine shall be positively secured to prevent shifting. Lifting capacities for various boom lengths and operating radii are for freely suspended loads and do not exceed 75% of a static tipping load. Capacities based on structural competence are denoted by an asterisk (\*).

Upper boom point capacity for liftcrane service with single part whip line is 30,000 Lbs. or 60,000 Lbs. with two part whip line. In all cases, upper boom point capacities cannot exceed those listed for main boom capacity.

250 Ft. thru 280 Ft. boom lengths require only the middle three sheaves to be used on lower boom point. All other sheaves must be removed from lower boom point.

Weight of all load blocks, hooks, weight ball, slings, hoist lines, etc., beneath boom point sheaves, is considered part of main boom load. Boom is not to be lowered beyond radii where combined weights are greater than rated capacity. Where no capacity is shown, operation is not intended or approved.

**OPERATING CONDITIONS:** Machine to operate on a firm uniformly supporting surface with gantry up and machine list not to exceed degrees noted with exception of 0 degree

machine list which must not exceed 0.5 degrees. Refer to boom rigging **No. 179809**, Wire Rope Specification chart **No. 8025-A**, and Counterweight Arrangement chart **No. 8026-A**. Crane operator judgment must be used to allow for dynamic load effects of swinging, hoisting or lowering, wind conditions, as well as adverse operating conditions and physical machine depreciation. Refer to operators manual for operating guidelines.

**OPERATING RADIUS:** Operating radius is horizontal distance from axis of rotation at barge deck to center of vertical hoist line or load block. Boom angle is angle between horizontal and centerline of boom butt and inserts, and is an indication of operating radius. In all cases, operating radius shall govern capacity.

**BOOM POINT ELEVATION:** Boom point elevation is vertical distance from barge deck to centerline of boom point shaft.

**MACHINE EQUIPMENT:** Machine equipped with 30 Ft. 9 in. crawlers, 48 in. treads, 28 Ft. retractable gantry, 12 part boom hoist reeving, boom support straps, 249,200 Lb. crane counterweight, two 30,000 Lb. and four 15,000 Lb. carbody counterweights.

Maximum Boom Length Lifted Unassisted Over Front, Side or Rear of Crawlers	
List	Boom Length
0 Degree	280 Ft.
1 Degree	280 Ft.
2 Degree	280 Ft.
3 Degree	280 Ft.
Load block, hook and weight ball on barge deck at start. Jib is not to be used on crawler machine while operating on a barge.	

Third Line Deduct
Deduct 600 Lbs. From Boom Capacities When Boom Is Equipped For Three Line Operation.



# Liftcrane Boom Capacities

# 2250 SERIES 3

**Boom No. 44 With Heavy Lift Top**  
**249,200 Lb. Crane Counterweight**  
**120,000 Lb. Carbody Counterweight**  
**Crawler Machine on a Static Barge**  
**0 Degree thru 3 Degree Static Machine List**  
**No Travel - 360 Degree Rating**

Oper. Radius Feet	Boom Angle Deg.	Boom Point Elev. Feet	0 Degree List Boom Capacity Pounds	1 Degree List Boom Capacity Pounds	2 Degree List Boom Capacity Pounds	3 Degree List Boom Capacity Pounds	Oper. Radius Feet
<b>70 Ft. BOOM</b>							
18	82.9	77.1	600,000 *				18
19	82.1	76.9	580,000 *				19
20	81.3	76.8	560,000 *	447,800 *			20
21	80.4	76.5	550,000 *	447,800 *	324,500 *		21
22	79.6	76.3	541,500 *	447,800 *	324,500 *	253,300 *	22
23	78.8	76.1	527,100 *	447,800 *	324,500 *	253,300 *	23
24	77.9	75.8	506,300 *	447,800 *	324,500 *	253,300 *	24
25	77.1	75.6	487,000 *	447,800 *	324,500 *	253,300 *	25
26	76.2	75.3	469,100 *	444,300 *	324,500 *	253,300 *	26
27	75.4	75.0	452,500 *	429,300 *	324,500 *	253,300 *	27
28	74.5	74.7	436,900 *	415,200 *	324,500 *	253,300 *	28
29	73.7	74.4	422,300 *	402,000 *	324,500 *	253,300 *	29
30	72.8	74.0	408,700 *	389,600 *	324,500 *	253,300 *	30
32	71.0	73.3	383,800 *	366,900 *	316,400 *	253,300 *	32
34	69.3	72.4	361,600 *	346,600 *	297,000 *	253,300 *	34
36	67.5	71.6	340,900 *	327,400 *	279,800 *	243,300 *	36
38	65.7	70.6	315,400 *	303,800 *	264,400 *	229,700 *	38
40	63.8	69.5	293,000 *	283,000 *	250,500 *	217,500 *	40
42	61.9	68.4	273,200 *	264,500 *	237,900 *	206,400 *	42
44	60.0	67.2	255,600 *	248,000 *	226,500 *	196,300 *	44
46	58.1	65.9	239,800 *	233,100 *	216,100 *	187,100 *	46
48	56.1	64.5	225,600 *	219,700 *	206,500 *	178,600 *	48
50	54.0	62.9	212,600 *	207,500 *	197,700 *	170,900 *	50
55	48.6	58.6	185,000 *	181,200 *	177,600 *	153,900 *	55
60	42.6	53.2	160,400 *	157,600 *	155,000 *	139,800 *	60
65	35.8	46.6	133,900 *	132,000 *	130,200 *	127,700 *	65
70	27.4	37.6	110,200 *	108,900 *	107,800 *	106,700 *	70



# Liftcrane Boom Capacities

# 2250 SERIES 3

**Boom No. 44 With Heavy Lift Top**  
**249,200 Lb. Crane Counterweight**  
**120,000 Lb. Carbody Counterweight**  
**Crawler Machine on a Static Barge**  
**0 Degree thru 3 Degree Static Machine List**  
**No Travel - 360 Degree Rating**

Oper. Radius Feet	Boom Angle Deg.	Boom Point Elev. Feet	0 Degree List Boom Capacity Pounds	1 Degree List Boom Capacity Pounds	2 Degree List Boom Capacity Pounds	3 Degree List Boom Capacity Pounds	Oper. Radius Feet
<b>80 Ft. BOOM</b>							
20	82.4	86.9	526,400 *				20
21	81.7	86.7	523,600 *	430,000 *			21
22	80.9	86.5	521,000 *	428,100 *	317,700 *		22
23	80.2	86.3	518,500 *	425,700 *	317,700 *		23
24	79.5	86.1	505,700 *	422,100 *	317,700 *	249,100 *	24
25	78.7	85.9	486,400 *	418,700 *	317,700 *	249,100 *	25
26	78.0	85.6	468,500 *	415,300 *	317,700 *	249,100 *	26
27	77.3	85.4	451,900 *	412,000 *	317,700 *	249,100 *	27
28	76.5	85.1	436,300 *	408,800 *	317,700 *	249,100 *	28
29	75.8	84.8	421,800 *	399,100 *	317,700 *	249,100 *	29
30	75.0	84.5	408,100 *	386,800 *	317,700 *	249,100 *	30
32	73.5	83.9	383,200 *	364,300 *	316,000 *	249,100 *	32
34	72.0	83.2	361,100 *	344,200 *	296,600 *	249,100 *	34
36	70.5	82.4	341,300 *	326,100 *	279,400 *	242,900 *	36
38	68.9	81.6	323,400 *	309,400	264,000 *	229,300 *	38
40	67.3	80.7	300,700 *	287,900	250,100 *	217,000 *	40
42	65.8	79.8	280,400 *	269,100	237,500 *	205,900 *	42
44	64.2	78.7	262,500 *	252,500	226,100 *	195,900 *	44
46	62.5	77.6	246,300 *	237,700	215,700 *	186,700 *	46
48	60.9	76.5	231,700 *	224,400	206,100 *	178,200 *	48
50	59.2	75.2	218,600 *	212,100 *	197,300 *	170,500 *	50
55	54.8	71.7	190,600 *	185,700 *	178,100 *	153,500 *	55
60	50.2	67.6	167,800 *	164,100 *	160,600 *	139,400 *	60
65	45.1	62.7	149,000 *	146,100 *	143,400 *	127,400 *	65
70	39.6	56.8	131,600 *	129,500 *	127,400 *	117,100 *	70
75	33.3	49.4	111,400 *	109,900 *	108,500 *	107,200 *	75
80	25.4	39.7	92,700 *	91,700 *	90,800 *	90,000 *	80



# Liftcrane Boom Capacities

# 2250 SERIES 3

Boom No. 44 With Heavy Lift Top  
 249,200 Lb. Crane Counterweight  
 120,000 Lb. Carbody Counterweight  
 Crawler Machine on a Static Barge  
 0 Degree thru 3 Degree Static Machine List  
 No Travel - 360 Degree Rating

Oper. Radius Feet	Boom Angle Deg.	Boom Point Elev. Feet	0 Degree List Boom Capacity Pounds	1 Degree List Boom Capacity Pounds	2 Degree List Boom Capacity Pounds	3 Degree List Boom Capacity Pounds	Oper. Radius Feet
<b>90 Ft. BOOM</b>							
21	82.6	96.9	498,600 *				21
22	81.9	96.7	495,600 *	401,500 *			22
23	81.3	96.5	492,600 *	398,100 *			23
24	80.6	96.3	489,800 *	394,800 *	310,300 *		24
25	80.0	96.1	486,000 *	391,600 *	310,300 *	244,300 *	25
26	79.3	95.9	468,100 *	388,500 *	310,300 *	244,300 *	26
27	78.7	95.7	451,500 *	385,500 *	310,300 *	244,300 *	27
28	78.0	95.4	435,900 *	382,500 *	310,300 *	244,300 *	28
29	77.4	95.2	421,400 *	379,600 *	310,300 *	244,300 *	29
30	76.7	94.9	407,700 *	376,800 *	310,300 *	244,300 *	30
32	75.4	94.4	382,900 *	362,000 *	310,300 *	244,300 *	32
34	74.1	93.7	360,700 *	342,100 *	296,400 *	244,300 *	34
36	72.7	93.1	340,900 *	324,200 *	279,200 *	242,600 *	36
38	71.4	92.4	323,100 *	307,300 *	263,700 *	229,000 *	38
40	70.0	91.6	304,200 *	286,100 *	249,900 *	216,700 *	40
42	68.6	90.8	283,300 *	267,400 *	237,300 *	205,700 *	42
44	67.2	89.9	264,900 *	251,000 *	225,900 *	195,600 *	44
46	65.8	88.9	248,700 *	236,300 *	215,500 *	186,400 *	46
48	64.4	87.9	234,200 *	223,200 *	205,900 *	178,000 *	48
50	63.0	86.8	221,200 *	211,400 *	197,100 *	170,200 *	50
55	59.3	83.9	194,000 *	186,400 *	177,900 *	153,300 *	55
60	55.4	80.4	172,400 *	166,300 *	160,400 *	139,200 *	60
65	51.3	76.5	153,500 *	149,800 *	145,100 *	127,200 *	65
70	47.0	71.8	137,400 *	134,600 *	131,800 *	117,000 *	70
75	42.3	66.5	123,600 *	121,400 *	119,300 *	108,100 *	75
80	37.1	60.0	110,700 *	109,000 *	107,300 *	100,200 *	80
85	31.2	52.1	94,600 *	93,300 *	92,200 *	91,000 *	85



# Liftcrane Boom Capacities

# 2250 SERIES 3

**Boom No. 44 With Heavy Lift Top**  
**249,200 Lb. Crane Counterweight**  
**120,000 Lb. Carbody Counterweight**  
**Crawler Machine on a Static Barge**  
**0 Degree thru 3 Degree Static Machine List**  
**No Travel - 360 Degree Rating**

Oper. Radius Feet	Boom Angle Deg.	Boom Point Elev. Feet	0 Degree List Boom Capacity Pounds	1 Degree List Boom Capacity Pounds	2 Degree List Boom Capacity Pounds	3 Degree List Boom Capacity Pounds	Oper. Radius Feet
<b>100 Ft. BOOM</b>							
22	82.8	106.8	479,300 *				22
23	82.2	106.7	476,300 *				23
24	81.6	106.5	473,400 *	369,900 *			24
25	81.0	106.3	470,600 *	366,900 *	302,000 *		25
26	80.4	106.1	467,400 *	364,100 *	302,000 *		26
27	79.8	105.9	450,700 *	361,300 *	301,900 *	238,900 *	27
28	79.3	105.7	435,200 *	358,500 *	301,900 *	238,900 *	28
29	78.7	105.5	420,600 *	355,900 *	301,500 *	238,900 *	29
30	78.1	105.2	407,000 *	353,300 *	299,600 *	238,900 *	30
32	76.9	104.7	382,100 *	348,200 *	295,900 *	238,800 *	32
34	75.7	104.2	360,000 *	339,700 *	292,400 *	238,700 *	34
36	74.5	103.6	340,200 *	321,900 *	278,600 *	238,600 *	36
38	73.3	103.0	322,400 *	305,000	263,200 *	228,400 *	38
40	72.1	102.3	304,000	284,000	249,300 *	216,200 *	40
42	70.9	101.5	283,100	265,600	236,800 *	205,100 *	42
44	69.7	100.8	264,700	249,300	225,400 *	195,000 *	44
46	68.4	99.9	248,400	234,700	215,000 *	185,800 *	46
48	67.2	99.0	234,000	221,700	205,400 *	177,400 *	48
50	65.9	98.1	221,000	210,000	196,600 *	169,700 *	50
55	62.7	95.5	193,700	185,200	176,900	152,700 *	55
60	59.3	92.5	172,100	165,300	158,600	138,600 *	60
65	55.9	89.2	154,400	148,900	143,500	126,700 *	65
70	52.3	85.3	139,800	135,300	130,800	116,400 *	70
75	48.5	80.9	126,700 *	123,700	119,900	107,500 *	75
80	44.4	75.9	114,700 *	112,400 *	110,300 *	99,700 *	80
85	40.0	70.0	104,100 *	102,400 *	100,600 *	92,900 *	85
90	35.1	63.1	94,000 *	92,600 *	91,200 *	86,700 *	90
95	29.5	54.7	80,900 *	79,900 *	78,900 *	78,000 *	95



# Liftcrane Boom Capacities

# 2250 SERIES 3

Boom No. 44 With Heavy Lift Top  
249,200 Lb. Crane Counterweight  
120,000 Lb. Carbody Counterweight  
Crawler Machine on a Static Barge  
0 Degree thru 3 Degree Static Machine List  
No Travel - 360 Degree Rating

Oper. Radius Feet	Boom Angle Deg.	Boom Point Elev. Feet	0 Degree List Boom Capacity Pounds	1 Degree List Boom Capacity Pounds	2 Degree List Boom Capacity Pounds	3 Degree List Boom Capacity Pounds	Oper. Radius Feet
<b>110 Ft. BOOM</b>							
23	82.9	116.8	374,400 *				23
24	82.4	116.6	371,800 *				24
25	81.8	116.5	369,400 *	301,600 *			25
26	81.3	116.3	367,000 *	300,000 *			26
27	80.8	116.1	364,700 *	298,500 *	265,200 *		27
28	80.3	115.9	362,500 *	297,000 *	264,000 *		28
29	79.7	115.7	360,300 *	295,600 *	262,900 *	230,800 *	29
30	79.2	115.5	358,200 *	294,200 *	261,800 *	230,800 *	30
32	78.1	115.0	354,300 *	291,600 *	259,700 *	230,700 *	32
34	77.0	114.6	350,600 *	289,100 *	257,700 *	230,500 *	34
36	76.0	114.0	339,800 *	286,700 *	255,800 *	230,400 *	36
38	74.9	113.4	321,900 *	284,500 *	254,100 *	227,900 *	38
40	73.8	112.8	303,900	282,000	249,000 *	215,700 *	40
42	72.7	112.2	282,900	263,800	236,400 *	204,700 *	42
44	71.6	111.5	264,500	247,600	225,000 *	194,600 *	44
46	70.5	110.7	248,300	233,300	214,600 *	185,400 *	46
48	69.4	109.9	233,800	220,400	205,000 *	177,000 *	48
50	68.2	109.1	220,800	208,700	196,300 *	169,300 *	50
55	65.4	106.8	193,500	184,100	175,100	152,400 *	55
60	62.4	104.2	171,800	164,300	157,000	138,300 *	60
65	59.4	101.2	154,200	148,100	142,100	126,300 *	65
70	56.3	97.9	139,500	134,500	129,500	116,100 *	70
75	53.0	94.1	127,200	123,000	118,800	107,200 *	75
80	49.6	89.9	116,600	113,100	109,500	99,400 *	80
85	46.0	85.1	106,900 *	104,500	101,500	92,500 *	85
90	42.2	79.7	97,600 *	95,700 *	93,900 *	86,400 *	90
95	38.0	73.4	89,200 *	87,700 *	86,300 *	80,900 *	95
100	33.3	66.0	80,900 *	79,700 *	78,500 *	76,000 *	100
105	28.0	57.1	70,000 *	69,100 *	68,300 *	67,500 *	105



# Liftcrane Boom Capacities

# 2250 SERIES 3

Boom No. 44 With Heavy Lift Top  
 249,200 Lb. Crane Counterweight  
 120,000 Lb. Carbody Counterweight  
 Crawler Machine on a Static Barge  
 0 Degree thru 3 Degree Static Machine List  
 No Travel - 360 Degree Rating

Oper. Radius Feet	Boom Angle Deg.	Boom Point Elev. Feet	0 Degree List Boom Capacity Pounds	1 Degree List Boom Capacity Pounds	2 Degree List Boom Capacity Pounds	3 Degree List Boom Capacity Pounds	Oper. Radius Feet
<b>120 Ft. BOOM</b>							
24	83.0	126.8	363,700 *				24
25	82.5	126.6	361,400 *				25
26	82.0	126.4	359,200 *	293,200 *			26
27	81.6	126.3	357,000 *	291,800 *			27
28	81.1	126.1	354,900 *	290,400 *			28
29	80.6	125.9	352,900 *	289,000 *	257,100 *		29
30	80.1	125.7	350,900 *	287,700 *	256,000 *		30
32	79.1	125.3	347,200 *	285,200 *	254,000 *	222,200 *	32
34	78.1	124.8	343,800 *	282,900 *	252,200 *	220,000 *	34
36	77.2	124.4	339,000 *	280,700 *	250,400 *	217,900 *	36
38	76.2	123.8	321,200 *	278,600 *	248,700 *	215,800 *	38
40	75.2	123.3	303,600	276,600 *	246,900 *	213,800 *	40
42	74.2	122.7	282,600	261,900	235,800 *	204,000 *	42
44	73.2	122.0	264,200	245,900	224,400 *	193,900 *	44
46	72.2	121.4	247,900	231,600	214,000 *	184,800 *	46
48	71.2	120.6	233,400	218,800	204,500 *	176,400 *	48
50	70.1	119.9	220,400	207,300	195,100	168,600 *	50
55	67.6	117.8	193,100	182,800	173,100	151,700 *	55
60	64.9	115.5	171,400	163,200	155,300	137,600 *	60
65	62.2	112.8	153,800	147,000	140,500	125,700 *	65
70	59.5	109.9	139,100	133,500	128,000	115,400 *	70
75	56.6	106.6	126,700	122,100	117,400	106,600 *	75
80	53.6	102.9	116,200	112,200	108,300	98,800 *	80
85	50.6	98.8	107,000	103,700	100,300	91,900 *	85
90	47.3	94.2	99,000	96,200	93,200	85,800 *	90
95	43.9	89.1	91,000 *	89,100 *	87,000	80,300 *	95
100	40.2	83.3	83,600 *	82,000 *	80,500 *	75,400 *	100
105	36.2	76.6	76,800 *	75,500 *	74,300 *	70,900 *	105
110	31.8	68.8	69,700 *	68,700 *	67,700 *	66,800 *	110
115	26.7	59.3	60,500 *	59,800 *	59,000 *	58,300 *	115





# Liftcrane Boom Capacities

# 2250 SERIES 3

Boom No. 44 With Heavy Lift Top  
249,200 Lb. Crane Counterweight  
120,000 Lb. Carbody Counterweight  
Crawler Machine on a Static Barge  
0 Degree thru 3 Degree Static Machine List  
No Travel - 360 Degree Rating

Oper. Radius Feet	Boom Angle Deg.	Boom Point Elev. Feet	0 Degree List Boom Capacity Pounds	1 Degree List Boom Capacity Pounds	2 Degree List Boom Capacity Pounds	3 Degree List Boom Capacity Pounds	Oper. Radius Feet
<b>130 Ft. BOOM</b>							
26	82.7	136.6	350,700 *				26
27	82.2	136.4	348,700 *				27
28	81.8	136.2	346,700 *	283,300 *			28
29	81.3	136.1	344,800 *	282,000 *			29
30	80.9	135.9	343,000 *	280,800 *	245,300 *		30
32	80.0	135.5	339,500 *	278,400 *	242,600 *	208,000 *	32
34	79.1	135.1	336,200 *	276,200 *	240,000 *	206,000 *	34
36	78.2	134.6	333,200 *	274,100 *	237,400 *	204,100 *	36
38	77.3	134.2	316,900 *	272,200 *	234,900 *	202,200 *	38
40	76.4	133.6	298,300 *	270,300 *	232,500 *	200,400 *	40
42	75.4	133.1	281,800 *	260,300 *	230,200 *	198,600 *	42
44	74.5	132.5	264,200	244,500	224,200 *	193,700 *	44
46	73.6	131.9	247,900	230,300	213,800 *	184,500 *	46
48	72.7	131.2	233,400	217,600	203,300	176,100 *	48
50	71.7	130.5	220,400	206,200	193,200	168,400 *	50
55	69.4	128.7	193,100	181,900	171,500	151,500 *	55
60	67.0	126.5	171,400	162,400	153,900	137,400 *	60
65	64.5	124.1	153,700	146,400	139,300	125,500 *	65
70	62.1	121.5	139,000	132,900	127,000	115,300 *	70
75	59.5	118.5	126,700	121,500	116,500	106,400 *	75
80	56.9	115.3	116,100	111,700	107,400	98,600 *	80
85	54.2	111.7	106,900	103,200	99,500	91,800 *	85
90	51.3	107.7	99,000	95,800	92,500	85,700 *	90
95	48.4	103.3	91,900	89,200	86,300	80,200 *	95
100	45.3	98.4	85,600 *	83,300	80,800	75,300 *	100
105	42.0	92.9	78,800 *	77,300 *	75,700 *	70,800 *	105
110	38.5	86.7	72,700 *	71,400 *	70,100 *	66,700 *	110
115	34.7	79.7	67,100 *	66,000 *	65,000 *	63,000 *	115
120	30.5	71.5	61,100 *	60,200 *	59,400 *	58,500 *	120
125	25.6	61.5	53,200 *	52,500 *	51,800 *	51,200 *	125



# Liftcrane Boom Capacities

# 2250 SERIES 3

**Boom No. 44 With Heavy Lift Top**  
**249,200 Lb. Crane Counterweight**  
**120,000 Lb. Carbody Counterweight**  
**Crawler Machine on a Static Barge**  
**0 Degree thru 3 Degree Static Machine List**  
**No Travel - 360 Degree Rating**

Oper. Radius Feet	Boom Angle Deg.	Boom Point Elev. Feet	0 Degree List Boom Capacity Pounds	1 Degree List Boom Capacity Pounds	2 Degree List Boom Capacity Pounds	3 Degree List Boom Capacity Pounds	Oper. Radius Feet
<b>140 Ft. BOOM</b>							
27	82.8	146.5	341,800 *				27
28	82.4	146.4	340,000 *				28
29	81.9	146.2	338,200 *	275,900 *			29
30	81.5	146.0	336,400 *	274,700 *			30
32	80.7	145.7	333,100 *	272,400 *	227,800 *		32
34	79.9	145.3	330,100 *	270,300 *	225,400 *	192,700 *	34
36	79.0	144.9	327,200 *	267,500 *	223,100 *	191,000 *	36
38	78.2	144.4	310,400 *	264,400 *	220,900 *	189,300 *	38
40	77.4	144.0	292,100 *	261,300 *	218,700 *	187,700 *	40
42	76.5	143.5	276,000 *	256,100 *	216,500 *	186,000 *	42
44	75.7	142.9	261,500 *	242,700	214,500 *	184,500 *	44
46	74.8	142.3	247,500	228,700	211,900	182,900 *	46
48	74.0	141.7	233,000	216,100	200,900	175,400 *	48
50	73.1	141.1	220,000	204,800	190,900	167,700 *	50
55	70.9	139.4	192,600	180,700	169,600	150,800 *	55
60	68.7	137.4	170,900	161,200	152,200	136,700 *	60
65	66.5	135.2	153,200	145,300	137,800	124,800 *	65
70	64.2	132.8	138,500	131,900	125,600	114,600 *	70
75	61.9	130.1	126,200	120,600	115,200	105,700 *	75
80	59.5	127.2	115,600	110,800	106,200	98,000 *	80
85	57.1	124.0	106,400	102,400	98,300	91,100 *	85
90	54.6	120.4	98,400	94,900	91,400	85,000 *	90
95	52.0	116.5	91,400	88,300	85,300	79,500 *	95
100	49.3	112.2	85,100	82,500	79,800	74,600 *	100
105	46.5	107.5	79,600	77,200	74,800	70,200 *	105
110	43.5	102.3	73,700 *	72,100 *	70,400	66,100 *	110
115	40.4	96.5	68,200 *	66,800 *	65,500 *	62,400 *	115
120	37.0	90.0	63,100 *	61,900 *	60,800 *	59,000 *	120
125	33.4	82.6	58,400 *	57,400 *	56,500 *	55,600 *	125
130	29.3	74.0	53,100 *	52,300 *	51,500 *	50,800 *	130



# Liftcrane Boom Capacities

# 2250 SERIES 3

Boom No. 44 With Heavy Lift Top  
 249,200 Lb. Crane Counterweight  
 120,000 Lb. Carbody Counterweight  
 Crawler Machine on a Static Barge  
 0 Degree thru 3 Degree Static Machine List  
 No Travel - 360 Degree Rating

Oper. Radius Feet	Boom Angle Deg.	Boom Point Elev. Feet	0 Degree List Boom Capacity Pounds	1 Degree List Boom Capacity Pounds	2 Degree List Boom Capacity Pounds	3 Degree List Boom Capacity Pounds	Oper. Radius Feet
<b>150 Ft. BOOM</b>							
28	82.9	156.5	302,400 *				28
29	82.5	156.3	300,500 *				29
30	82.1	156.2	298,600 *				30
32	81.3	155.8	295,000 *	223,900 *			32
34	80.6	155.5	291,500 *	221,800 *	191,000 *		34
36	79.8	155.1	288,300 *	219,900 *	189,600 *	166,600 *	36
38	79.0	154.7	285,200 *	218,100 *	188,200 *	165,500 *	38
40	78.2	154.2	282,300 *	216,300 *	186,800 *	163,000 *	40
42	77.4	153.8	271,500 *	214,200 *	183,300 *	160,300 *	42
44	76.6	153.3	257,200 *	209,800 *	180,000 *	157,600 *	44
46	75.8	152.7	244,200 *	205,600 *	176,800 *	155,000 *	46
48	75.1	152.2	232,500 *	201,500 *	173,600 *	152,500 *	48
50	74.3	151.6	219,600	197,600 *	170,600 *	150,000 *	50
55	72.3	150.0	192,200	179,500	163,400 *	144,200 *	55
60	70.2	148.2	170,500	160,200	150,600	136,200 *	60
65	68.2	146.2	152,800	144,300	136,300	124,300 *	65
70	66.1	143.9	138,100	131,000	124,300	114,000 *	70
75	63.9	141.5	125,700	119,700	114,000	105,200 *	75
80	61.8	138.8	115,100	110,000	105,100	97,400 *	80
85	59.6	135.9	106,000	101,600	97,300	90,600 *	85
90	57.3	132.6	98,000	94,200	90,400	84,500 *	90
95	55.0	129.1	91,000	87,600	84,300	79,000 *	95
100	52.6	125.3	84,700	81,800	78,800	74,100 *	100
105	50.1	121.2	79,100	76,500	73,900	69,700 *	105
110	47.5	116.6	74,100	71,800	69,500	65,600 *	110
115	44.8	111.6	69,100 *	67,500 *	65,500	61,900 *	115
120	42.0	106.1	64,100 *	62,700 *	61,300 *	58,500 *	120
125	38.9	100.0	59,400 *	58,200 *	57,100 *	55,400 *	125
130	35.7	93.2	55,100 *	54,100 *	53,100 *	52,100 *	130
135	32.2	85.4	51,000 *	50,200 *	49,400 *	48,600 *	135
140	28.3	76.5	46,300 *	45,600 *	44,900 *	44,300 *	140



# Liftcrane Boom Capacities

# 2250 SERIES 3

Boom No. 44 With Heavy Lift Top  
 249,200 Lb. Crane Counterweight  
 120,000 Lb. Carbody Counterweight  
 Crawler Machine on a Static Barge  
 0 Degree thru 3 Degree Static Machine List  
 No Travel - 360 Degree Rating

Oper. Radius Feet	Boom Angle Deg.	Boom Point Elev. Feet	0 Degree List Boom Capacity Pounds	1 Degree List Boom Capacity Pounds	2 Degree List Boom Capacity Pounds	3 Degree List Boom Capacity Pounds	Oper. Radius Feet
<b>160 Ft. BOOM</b>							
29	83.0	166.4	292,100 *				29
30	82.6	166.3	290,300 *				30
32	81.9	166.0	287,100 *	217,700 *			32
34	81.1	165.7	284,000 *	215,900 *			34
36	80.4	165.3	281,100 *	214,100 *	184,700 *		36
38	79.7	164.9	278,300 *	212,400 *	183,400 *	160,600 *	38
40	79.0	164.5	275,700 *	210,800 *	180,600 *	157,700 *	40
42	78.2	164.0	267,200 *	206,800 *	177,100 *	154,900 *	42
44	77.5	163.6	253,000 *	202,400 *	173,700 *	152,200 *	44
46	76.8	163.1	240,300 *	198,200 *	170,500 *	149,600 *	46
48	76.0	162.6	228,700 *	194,100 *	167,300 *	147,100 *	48
50	75.3	162.0	218,200 *	190,200 *	164,300 *	144,600 *	50
55	73.4	160.5	191,700	178,200	157,000 *	138,700 *	55
60	71.5	158.8	170,000	159,000	148,900	133,200 *	60
65	69.6	157.0	152,300	143,200	134,800	123,600 *	65
70	67.7	154.9	137,600	130,000	122,900	113,300 *	70
75	65.7	152.6	125,200	118,800	112,700	104,500 *	75
80	63.7	150.2	114,600	109,100	103,800	96,700 *	80
85	61.7	147.5	105,400	100,700	96,100	89,900 *	85
90	59.6	144.5	97,400	93,300	89,300	83,800 *	90
95	57.5	141.3	90,400	86,800	83,200	78,400 *	95
100	55.3	137.9	84,100	81,000	77,800	73,400 *	100
105	53.1	134.1	78,500	75,700	72,900	69,000 *	105
110	50.7	130.1	73,500	71,000	68,500	65,000 *	110
115	48.4	125.6	69,000	66,800	64,500	61,300 *	115
120	45.9	120.8	64,600 *	62,900	60,800	57,900 *	120
125	43.3	115.6	60,000 *	58,600 *	57,200 *	54,700 *	125
130	40.5	109.8	55,700 *	54,500 *	53,300 *	51,800 *	130
135	37.6	103.4	51,700 *	50,600 *	49,600 *	48,600 *	135
140	34.5	96.2	47,900 *	47,000 *	46,200 *	45,300 *	140
145	31.1	88.2	44,400 *	43,700 *	42,900 *	42,200 *	145
150	27.3	78.8	40,100 *	39,500 *	38,900 *	38,300 *	150



# Liftcrane Boom Capacities

# 2250 SERIES 3

**Boom No. 44 With Heavy Lift Top**  
**249,200 Lb. Crane Counterweight**  
**120,000 Lb. Carbody Counterweight**  
**Crawler Machine on a Static Barge**  
**0 Degree thru 3 Degree Static Machine List**  
**No Travel - 360 Degree Rating**

Oper. Radius Feet	Boom Angle Deg.	Boom Point Elev. Feet	0 Degree List Boom Capacity Pounds	1 Degree List Boom Capacity Pounds	2 Degree List Boom Capacity Pounds	3 Degree List Boom Capacity Pounds	Oper. Radius Feet
<b>170 Ft. BOOM</b>							
30	83.0	176.4	284,100 *				30
32	82.4	176.1	281,100 *				32
34	81.7	175.8	278,300 *	211,100 *			34
36	81.0	175.5	275,600 *	209,500 *	180,800 *		36
38	80.3	175.1	273,100 *	207,900 *	178,600 *		38
40	79.6	174.7	270,700 *	204,600 *	175,000 *	153,100 *	40
42	78.9	174.3	263,000 *	200,100 *	171,600 *	150,300 *	42
44	78.2	173.8	249,000 *	195,800 *	168,200 *	147,600 *	44
46	77.5	173.4	236,400 *	191,600 *	165,000 *	145,000 *	46
48	76.9	172.9	225,000 *	187,600 *	161,900 *	142,500 *	48
50	76.2	172.4	214,700 *	183,700 *	158,800 *	140,000 *	50
55	74.4	171.0	191,600	174,600 *	151,700 *	134,100 *	55
60	72.6	169.4	169,800	158,200	145,000 *	128,600 *	60
65	70.9	167.6	152,100	142,600	133,700	123,400 *	65
70	69.1	165.7	137,400	129,400	121,900	113,200 *	70
75	67.2	163.6	125,000	118,200	111,800	104,300 *	75
80	65.4	161.3	114,500	108,600	103,000	96,600 *	80
85	63.5	158.8	105,300	100,200	95,400	89,700 *	85
90	61.6	156.1	97,300	92,900	88,600	83,600 *	90
95	59.6	153.2	90,300	86,400	82,600	78,200 *	95
100	57.6	150.0	84,000	80,600	77,200	73,300 *	100
105	55.6	146.6	78,400	75,400	72,400	68,900 *	105
110	53.5	142.9	73,400	70,700	68,000	64,800 *	110
115	51.3	138.9	68,800	66,400	64,000	61,100 *	115
120	49.1	134.6	64,700	62,600	60,400	57,700 *	120
125	46.8	129.9	60,900	59,000	57,000	54,600 *	125
130	44.4	124.9	56,700 *	55,300 *	53,900 *	51,700 *	130
135	41.9	119.3	52,700 *	51,500 *	50,300 *	49,100 *	135
140	39.2	113.3	49,100 *	48,000 *	46,900 *	45,900 *	140
145	36.4	106.6	45,600 *	44,700 *	43,800 *	42,900 *	145
150	33.4	99.2	42,400 *	41,600 *	40,800 *	40,000 *	150
155	30.1	90.8	39,300 *	38,600 *	37,900 *	37,300 *	155
160	26.5	81.1	35,500 *	34,800 *	34,300 *	33,700 *	160



# Liftcrane Boom Capacities

# 2250 SERIES 3

**Boom No. 44 With Heavy Lift Top**  
**249,200 Lb. Crane Counterweight**  
**120,000 Lb. Carbody Counterweight**  
**Crawler Machine on a Static Barge**  
**0 Degree thru 3 Degree Static Machine List**  
**No Travel - 360 Degree Rating**

Oper. Radius Feet	Boom Angle Deg.	Boom Point Elev. Feet	0 Degree List Boom Capacity Pounds	1 Degree List Boom Capacity Pounds	2 Degree List Boom Capacity Pounds	3 Degree List Boom Capacity Pounds	Oper. Radius Feet
<b>180 Ft. BOOM</b>							
32	82.8	186.2	274,600 *				32
34	82.1	185.9	272,100 *				34
36	81.5	185.6	269,700 *	204,400 *			36
38	80.9	185.3	267,400 *	201,700 *	172,400 *		38
40	80.2	184.9	265,200 *	197,200 *	168,800 *		40
42	79.6	184.5	258,200 *	192,800 *	165,400 *	144,500 *	42
44	78.9	184.1	244,600 *	188,500 *	162,100 *	142,400 *	44
46	78.3	183.6	232,200 *	184,400 *	158,900 *	139,700 *	46
48	77.6	183.2	221,000 *	180,500 *	155,800 *	137,200 *	48
50	76.9	182.7	210,700 *	176,600 *	152,800 *	134,800 *	50
55	75.3	181.4	188,900 *	167,600 *	145,700 *	128,900 *	55
60	73.6	179.9	169,300	157,100	139,100 *	123,500 *	60
65	72.0	178.3	151,600	141,500	132,200	118,400 *	65
70	70.3	176.5	136,900	128,400	120,500	112,500 *	70
75	68.6	174.5	124,500	117,300	110,500	103,600 *	75
80	66.8	172.3	113,900	107,700	101,800	95,900 *	80
85	65.1	170.0	104,700	99,400	94,200	89,000 *	85
90	63.3	167.5	96,700	92,000	87,500	83,000 *	90
95	61.5	164.8	89,700	85,600	81,500	77,500 *	95
100	59.6	161.8	83,400	79,800	76,200	72,600 *	100
105	57.8	158.7	77,800	74,600	71,400	68,200 *	105
110	55.8	155.3	72,800	69,900	67,000	64,100 *	110
115	53.9	151.7	68,300	65,700	63,100	60,400 *	115
120	51.8	147.7	64,100	61,800	59,500	57,100 *	120
125	49.8	143.5	60,300	58,300	56,100	53,900 *	125
130	47.6	139.0	56,900	55,000	53,100	51,100 *	130
135	45.4	134.1	52,900 *	51,500 *	50,200 *	48,400 *	135
140	43.1	128.8	49,300 *	48,000 *	46,800 *	45,700 *	140
145	40.6	123.0	45,800 *	44,700 *	43,700 *	42,700 *	145
150	38.1	116.7	42,600 *	41,700 *	40,700 *	39,800 *	150
155	35.4	109.8	39,600 *	38,800 *	38,000 *	37,200 *	155
160	32.4	102.1	36,800 *	36,100 *	35,400 *	34,700 *	160
165	29.2	93.4	34,100 *	33,500 *	32,900 *	32,300 *	165
170	25.7	83.3	30,500 *	29,900 *	29,400 *	28,900 *	170



# Liftcrane Boom Capacities

# 2250 SERIES 3

Boom No. 44 With Heavy Lift Top  
 249,200 Lb. Crane Counterweight  
 120,000 Lb. Carbody Counterweight  
 Crawler Machine on a Static Barge  
 0 Degree thru 3 Degree Static Machine List  
 No Travel - 360 Degree Rating

Oper. Radius Feet	Boom Angle Deg.	Boom Point Elev. Feet	0 Degree List Boom Capacity Pounds	1 Degree List Boom Capacity Pounds	2 Degree List Boom Capacity Pounds	3 Degree List Boom Capacity Pounds	Oper. Radius Feet
<b>190 Ft. BOOM</b>							
34	82.6	196.0	241,300 *				34
36	81.9	195.7	238,800 *	175,900 *			36
38	81.3	195.4	236,500 *	174,600 *			38
40	80.7	195.1	234,200 *	173,200 *	144,900 *		40
42	80.1	194.7	232,000 *	171,600 *	142,600 *		42
44	79.5	194.3	229,900 *	168,500 *	140,300 *	119,900 *	44
46	78.9	193.9	227,200 *	165,500 *	138,100 *	118,200 *	46
48	78.3	193.4	218,000 *	162,600 *	135,900 *	116,400 *	48
50	77.6	193.0	207,800 *	159,800 *	133,800 *	114,800 *	50
55	76.1	191.7	186,000 *	153,100 *	128,700 *	110,700 *	55
60	74.5	190.3	168,300 *	146,800 *	123,900 *	106,900 *	60
65	72.9	188.8	151,100	140,500	119,300 *	103,300 *	65
70	71.4	187.1	136,400	127,500	115,000 *	99,800 *	70
75	69.7	185.3	124,000	116,400	109,300	96,500 *	75
80	68.1	183.2	113,400	106,900	100,700	93,300 *	80
85	66.5	181.1	104,200	98,600	93,200	88,200	85
90	64.8	178.7	96,200	91,300	86,500	82,100	90
95	63.1	176.2	89,200	84,800	80,600	76,600	95
100	61.4	173.4	82,900	79,000	75,300	71,700	100
105	59.7	170.5	77,300	73,900	70,500	67,300	105
110	57.9	167.4	72,300	69,200	66,200	63,300	110
115	56.1	164.0	67,700	65,000	62,200	59,600	115
120	54.2	160.4	63,600	61,100	58,600	56,300	120
125	52.3	156.6	59,800	57,600	55,300	53,200	125
130	50.3	152.4	56,400	54,400	52,300	50,300	130
135	48.3	148.0	53,200	51,400	49,500	47,700	135
140	46.2	143.2	49,500 *	48,100 *	46,800 *	45,200	140
145	44.1	138.1	46,100 *	44,800 *	43,600 *	42,500 *	145
150	41.8	132.6	42,900 *	41,800 *	40,700 *	39,700 *	150
155	39.5	126.6	39,900 *	38,900 *	38,000 *	37,100 *	155
160	37.0	120.0	37,100 *	36,300 *	35,400 *	34,600 *	160
165	34.4	112.8	34,500 *	33,700 *	33,000 *	32,300 *	165
170	31.5	104.8	31,900 *	31,300 *	30,600 *	30,000 *	170
175	28.4	95.8	29,500 *	29,000 *	28,400 *	27,900 *	175



# Liftcrane Boom Capacities

# 2250 SERIES 3

**Boom No. 44 With Heavy Lift Top**  
**249,200 Lb. Crane Counterweight**  
**120,000 Lb. Carbody Counterweight**  
**Crawler Machine on a Static Barge**  
**0 Degree thru 3 Degree Static Machine List**  
**No Travel - 360 Degree Rating**

Oper. Radius Feet	Boom Angle Deg.	Boom Point Elev. Feet	0 Degree List Boom Capacity Pounds	1 Degree List Boom Capacity Pounds	2 Degree List Boom Capacity Pounds	3 Degree List Boom Capacity Pounds	Oper. Radius Feet
<b>200 Ft. BOOM</b>							
34	82.9	206.1	233,400 *				34
36	82.4	205.8	231,200 *				36
38	81.8	205.5	229,100 *	169,200 *			38
40	81.2	205.2	227,100 *	168,000 *			40
42	80.6	204.8	225,200 *	164,800 *	137,100 *		42
44	80.0	204.5	223,200 *	161,700 *	134,800 *	115,300 *	44
46	79.4	204.1	218,200 *	158,700 *	132,500 *	113,500 *	46
48	78.9	203.7	213,400 *	155,800 *	130,300 *	111,700 *	48
50	78.3	203.2	205,200 *	153,000 *	128,200 *	110,000 *	50
55	76.8	202.1	183,500 *	146,300 *	123,000 *	105,900 *	55
60	75.3	200.7	165,800 *	140,000 *	118,200 *	102,000 *	60
65	73.8	199.3	150,600	134,100 *	113,600 *	98,400 *	65
70	72.3	197.7	135,900	126,500	109,300 *	94,800 *	70
75	70.8	195.9	123,400	115,400	105,200 *	91,500 *	75
80	69.3	194.0	112,800	105,900	99,500	88,300 *	80
85	67.7	192.0	103,600	97,700	92,000	85,200 *	85
90	66.2	189.8	95,600	90,400	85,400	80,800	90
95	64.6	187.4	88,600	84,000	79,500	75,400	95
100	63.0	184.8	82,300	78,200	74,300	70,500	100
105	61.3	182.1	76,700	73,100	69,500	66,200	105
110	59.7	179.2	71,700	68,400	65,200	62,200	110
115	58.0	176.0	67,100	64,200	61,300	58,500	115
120	56.3	172.7	63,000	60,300	57,700	55,200	120
125	54.5	169.1	59,200	56,800	54,400	52,100	125
130	52.7	165.3	55,800	53,600	51,400	49,300	130
135	50.9	161.3	52,600	50,600	48,600	46,700	135
140	49.0	157.0	49,500 *	47,800	46,000	44,200	140
145	47.0	152.3	46,100 *	44,700 *	43,300 *	42,000	145
150	45.0	147.3	42,900 *	41,700 *	40,400 *	39,300 *	150
155	42.9	142.0	39,900 *	38,800 *	37,700 *	36,700 *	155
160	40.7	136.2	37,100 *	36,100 *	35,200 *	34,200 *	160
165	38.4	130.0	34,500 *	33,600 *	32,700 *	31,900 *	165
170	36.0	123.2	32,000 *	31,200 *	30,500 *	29,700 *	170
175	33.4	115.8	29,700 *	29,000 *	28,300 *	27,600 *	175
180	30.7	107.5	27,400 *	26,800 *	26,200 *	25,600 *	180
185	27.7	98.3	25,200 *	24,700 *	24,200 *	23,700 *	185





# Liftcrane Boom Capacities

# 2250 SERIES 3

**Boom No. 44 With Heavy Lift Top**  
**249,200 Lb. Crane Counterweight**  
**120,000 Lb. Carbody Counterweight**  
**Crawler Machine on a Static Barge**  
**0 Degree thru 3 Degree Static Machine List**  
**No Travel - 360 Degree Rating**

Oper. Radius Feet	Boom Angle Deg.	Boom Point Elev. Feet	0 Degree List Boom Capacity Pounds	1 Degree List Boom Capacity Pounds	2 Degree List Boom Capacity Pounds	3 Degree List Boom Capacity Pounds	Oper. Radius Feet
<b>210 Ft. BOOM</b>							
36	82.7	215.9	225,300 *				36
38	82.2	215.6	223,500 *				38
40	81.6	215.3	221,700 *	161,500 *			40
42	81.1	215.0	219,300 *	158,400 *			42
44	80.5	214.6	214,300 *	155,400 *	129,700 *		44
46	80.0	214.3	209,400 *	152,500 *	127,500 *	109,400 *	46
48	79.4	213.9	204,700 *	149,600 *	125,300 *	107,600 *	48
50	78.8	213.5	200,100 *	146,800 *	123,200 *	105,900 *	50
55	77.4	212.3	180,800 *	140,100 *	118,000 *	101,800 *	55
60	76.0	211.1	163,300 *	133,900 *	113,200 *	97,900 *	60
65	74.6	209.7	148,700 *	128,000 *	108,700 *	94,200 *	65
70	73.2	208.2	135,600	122,500 *	104,400 *	90,700 *	70
75	71.8	206.5	123,200	114,800	100,300 *	87,300 *	75
80	70.3	204.7	112,600	105,300	96,400 *	84,200 *	80
85	68.8	202.8	103,400	97,100	91,200	81,100 *	85
90	67.4	200.7	95,400	89,900	84,700	78,200 *	90
95	65.9	198.5	88,300	83,500	78,800	74,500	95
100	64.4	196.1	82,000	77,700	73,600	69,700	100
105	62.8	193.5	76,400	72,600	68,900	65,400	105
110	61.3	190.8	71,400	68,000	64,600	61,400	110
115	59.7	187.8	66,900	63,800	60,700	57,800	115
120	58.1	184.7	62,700	59,900	57,200	54,500	120
125	56.4	181.4	59,000	56,400	53,900	51,500	125
130	54.8	177.9	55,500	53,200	50,900	48,700	130
135	53.1	174.1	52,300	50,200	48,100	46,100	135
140	51.3	170.1	49,400	47,500	45,500	43,700	140
145	49.5	165.9	46,500 *	44,900	43,100	41,400	145
150	47.7	161.4	43,400 *	42,000 *	40,600 *	39,300	150
155	45.8	156.5	40,400 *	39,100 *	37,900 *	36,800 *	155
160	43.8	151.3	37,600 *	36,500 *	35,400 *	34,300 *	160
165	41.8	145.8	35,000 *	33,900 *	33,000 *	32,000 *	165
170	39.7	139.8	32,500 *	31,600 *	30,700 *	29,900 *	170
175	37.4	133.4	30,200 *	29,300 *	28,600 *	27,800 *	175
180	35.1	126.4	27,900 *	27,200 *	26,500 *	25,900 *	180
185	32.6	118.7	25,800 *	25,200 *	24,600 *	24,000 *	185
190	29.9	110.2	23,900 *	23,200 *	22,700 *	22,200 *	190
195	27.0	100.6	22,000 *	21,400 *	20,900 *	20,500 *	195



# Liftcrane Boom Capacities

# 2250 SERIES 3

Boom No. 44 With Heavy Lift Top  
249,200 Lb. Crane Counterweight  
120,000 Lb. Carbody Counterweight  
Crawler Machine on a Static Barge  
0 Degree thru 3 Degree Static Machine List  
No Travel - 360 Degree Rating

Oper. Radius Feet	Boom Angle Deg.	Boom Point Elev. Feet	0 Degree List Boom Capacity Pounds	1 Degree List Boom Capacity Pounds	2 Degree List Boom Capacity Pounds	3 Degree List Boom Capacity Pounds	Oper. Radius Feet
<b>220 Ft. BOOM</b>							
38	82.5	225.8	217,300 *				38
40	82.0	225.5	214,800 *	159,000 *			40
42	81.5	225.1	209,800 *	155,800 *			42
44	80.9	224.8	205,000 *	152,700 *	127,200 *		44
46	80.4	224.4	200,200 *	149,700 *	124,900 *		46
48	79.9	224.1	195,600 *	146,800 *	122,700 *	101,700 *	48
50	79.4	223.7	191,200 *	143,900 *	120,500 *	101,600 *	50
55	78.0	222.6	177,800 *	137,100 *	115,300 *	99,300 *	55
60	76.7	221.4	160,500 *	130,800 *	110,400 *	95,300 *	60
65	75.3	220.1	146,000 *	124,800 *	105,700 *	91,500 *	65
70	74.0	218.7	133,800 *	119,200 *	101,300 *	87,900 *	70
75	72.6	217.1	122,600	113,900 *	97,100 *	84,500 *	75
80	71.2	215.4	112,000	104,400	93,200 *	81,200 *	80
85	69.9	213.5	102,800	96,200	89,400 *	78,100 *	85
90	68.5	211.6	94,800	89,000	83,600	75,100 *	90
95	67.0	209.4	87,700	82,600	77,800	72,300 *	95
100	65.6	207.2	81,500	76,900	72,600	68,600	100
105	64.2	204.7	75,800	71,800	67,900	64,300	105
110	62.7	202.2	70,800	67,200	63,700	60,400	110
115	61.2	199.4	66,300	63,000	59,800	56,800	115
120	59.7	196.5	62,100	59,200	56,200	53,500	120
125	58.2	193.4	58,300	55,700	53,000	50,500	125
130	56.6	190.1	54,900	52,400	50,000	47,700	130
135	55.0	186.6	51,700	49,500	47,200	45,100	135
140	53.4	182.9	48,800	46,700	44,700	42,700	140
145	51.7	179.0	46,100	44,200	42,300	40,500	145
150	50.1	174.8	43,200 *	41,600 *	40,100	38,400	150
155	48.3	170.4	40,200 *	38,800 *	37,500 *	36,200 *	155
160	46.5	165.6	37,400 *	36,100 *	34,900 *	33,800 *	160
165	44.7	160.6	34,800 *	33,600 *	32,600 *	31,500 *	165
170	42.8	155.2	32,300 *	31,300 *	30,300 *	29,400 *	170
175	40.8	149.5	30,000 *	29,100 *	28,200 *	27,300 *	175
180	38.7	143.3	27,800 *	27,000 *	26,200 *	25,400 *	180
185	36.5	136.6	25,700 *	25,000 *	24,300 *	23,600 *	185
190	34.2	129.4	23,700 *	23,100 *	22,400 *	21,800 *	190
195	31.8	121.5	21,800 *	21,200 *	20,700 *	20,100 *	195
200	29.2	112.7	20,000 *	19,500 *	19,000 *	18,500 *	200
205	26.3	102.9	18,300 *	17,800 *	17,300 *	16,900 *	205



# Liftcrane Boom Capacities

# 2250 SERIES 3

**Boom No. 44 With Heavy Lift Top**  
**249,200 Lb. Crane Counterweight**  
**120,000 Lb. Carbody Counterweight**  
**Crawler Machine on a Static Barge**  
**0 Degree thru 3 Degree Static Machine List**  
**No Travel - 360 Degree Rating**

Oper. Radius Feet	Boom Angle Deg.	Boom Point Elev. Feet	0 Degree List Boom Capacity Pounds	1 Degree List Boom Capacity Pounds	2 Degree List Boom Capacity Pounds	3 Degree List Boom Capacity Pounds	Oper. Radius Feet
<b>230 Ft. BOOM</b>							
38	82.9	235.9	193,200 *				38
40	82.4	235.6	191,600 *				40
42	81.8	235.3	190,000 *	138,800 *			42
44	81.3	234.9	188,500 *	136,700 *			44
46	80.8	234.6	187,100 *	134,600 *	109,100 *		46
48	80.3	234.2	183,900 *	132,500 *	107,800 *		48
50	79.8	233.9	180,200 *	130,400 *	106,300 *	85,600 *	50
55	78.6	232.9	170,900 *	125,300 *	102,500 *	85,300 *	55
60	77.3	231.7	158,500 *	120,500 *	98,900 *	83,300 *	60
65	76.0	230.5	144,100 *	115,900 *	95,500 *	80,600 *	65
70	74.7	229.1	131,900 *	111,300 *	92,200 *	78,000 *	70
75	73.4	227.6	121,500 *	106,700 *	89,100 *	75,500 *	75
80	72.1	226.0	111,500 *	102,200 *	86,000 *	73,100 *	80
85	70.8	224.2	102,300 *	95,400 *	82,900 *	70,700 *	85
90	69.4	222.3	94,300 *	88,200 *	79,800 *	68,500 *	90
95	68.1	220.3	87,200 *	81,900 *	76,800 *	66,200 *	95
100	66.7	218.2	80,900 *	76,200 *	71,700 *	63,900 *	100
105	65.4	215.9	75,300 *	71,100 *	67,000 *	61,700 *	105
110	64.0	213.4	70,300 *	66,500 *	62,800 *	59,300 *	110
115	62.6	210.8	65,700 *	62,300 *	58,900 *	55,800 *	115
120	61.2	208.1	61,600 *	58,500 *	55,400 *	52,600 *	120
125	59.7	205.1	57,800 *	55,000 *	52,200 *	49,600 *	125
130	58.3	202.1	54,300 *	51,800 *	49,200 *	46,800 *	130
135	56.8	198.8	51,200 *	48,800 *	46,500 *	44,200 *	135
140	55.2	195.3	48,200 *	46,100 *	43,900 *	41,800 *	140
145	53.7	191.7	45,500 *	43,500 *	41,500 *	39,600 *	145
150	52.1	187.8	43,000 *	41,200 *	39,300 *	37,500 *	150
155	50.5	183.7	40,100 *	38,600 *	37,100 *	35,600 *	155
160	48.9	179.3	37,300 *	35,900 *	34,600 *	33,400 *	160
165	47.2	174.7	34,700 *	33,400 *	32,200 *	31,100 *	165
170	45.4	169.8	32,200 *	31,100 *	30,000 *	29,000 *	170
175	43.6	164.6	29,900 *	28,900 *	27,900 *	26,900 *	175
180	41.8	159.0	27,700 *	26,800 *	25,900 *	25,000 *	180
185	39.8	153.1	25,600 *	24,800 *	24,000 *	23,200 *	185
190	37.8	146.7	23,700 *	22,900 *	22,200 *	21,500 *	190
195	35.7	139.8	21,800 *	21,100 *	20,400 *	19,800 *	195
200	33.5	132.4	20,000 *	19,400 *	18,800 *	18,200 *	200
205	31.1	124.2	18,300 *	17,700 *	17,200 *	16,700 *	205
210	28.5	115.2	16,700 *	16,100 *	15,600 *	15,200 *	210
215	25.7	105.1	15,100 *	14,500 *	14,100 *	13,800 *	215



# Liftcrane Boom Capacities

# 2250 SERIES 3

**Boom No. 44 With Heavy Lift Top**  
**249,200 Lb. Crane Counterweight**  
**120,000 Lb. Carbody Counterweight**  
**Crawler Machine on a Static Barge**  
**0 Degree thru 3 Degree Static Machine List**  
**No Travel - 360 Degree Rating**

Oper. Radius Feet	Boom Angle Deg.	Boom Point Elev. Feet	0 Degree List Boom Capacity Pounds	1 Degree List Boom Capacity Pounds	2 Degree List Boom Capacity Pounds	3 Degree List Boom Capacity Pounds	Oper. Radius Feet
<b>240 Ft. BOOM</b>							
40	82.7	245.7	185,800 *				40
42	82.2	245.4	184,400 *				42
44	81.7	245.1	181,900 *	130,100 *			44
46	81.2	244.7	178,400 *	127,900 *			46
48	80.7	244.4	174,900 *	125,800 *	98,500 *		48
50	80.3	244.0	171,300 *	123,700 *	98,300 *		50
55	79.0	243.1	162,500 *	118,700 *	97,200 *	76,600 *	55
60	77.8	242.0	153,900 *	113,900 *	93,600 *	76,200 *	60
65	76.6	240.8	141,600 *	109,300 *	90,100 *	75,800 *	65
70	75.4	239.5	129,500 *	104,900 *	86,800 *	73,400 *	70
75	74.1	238.0	119,100 *	100,500 *	83,600 *	70,900 *	75
80	72.9	236.5	110,200 *	96,200 *	80,500 *	68,400 *	80
85	71.6	234.8	101,700	92,000 *	77,500 *	66,000 *	85
90	70.3	233.0	93,700	87,400	74,600 *	63,700 *	90
95	69.1	231.1	86,600	81,000	71,700 *	61,500 *	95
100	67.8	229.1	80,300	75,400	68,800 *	59,300 *	100
105	66.5	226.9	74,700	70,300	66,000 *	57,100 *	105
110	65.2	224.6	69,600	65,700	61,800	55,000 *	110
115	63.8	222.1	65,100	61,500	58,000	52,800 *	115
120	62.5	219.5	60,900	57,700	54,500	50,700 *	120
125	61.1	216.7	57,200	54,200	51,300	48,600 *	125
130	59.7	213.8	53,700	51,000	48,300	45,800	130
135	58.3	210.7	50,500	48,000	45,600	43,300	135
140	56.9	207.5	47,600	45,300	43,000	40,900	140
145	55.5	204.0	44,900	42,800	40,700	38,700	145
150	54.0	200.4	42,300	40,400	38,500	36,600	150
155	52.5	196.6	39,800 *	38,200 *	36,400	34,700	155
160	50.9	192.5	37,000 *	35,500 *	34,100 *	32,700 *	160
165	49.4	188.2	34,400 *	33,000 *	31,700 *	30,500 *	165
170	47.8	183.7	31,900 *	30,700 *	29,500 *	28,300 *	170
175	46.1	178.9	29,600 *	28,400 *	27,400 *	26,300 *	175
180	44.4	173.9	27,400 *	26,400 *	25,400 *	24,400 *	180
185	42.6	168.5	25,300 *	24,400 *	23,500 *	22,600 *	185
190	40.8	162.7	23,400 *	22,500 *	21,700 *	20,900 *	190
195	38.9	156.6	21,500 *	20,700 *	20,000 *	19,200 *	195
200	37.0	150.0	19,700 *	19,000 *	18,300 *	17,700 *	200
205	34.9	142.9	18,000 *	17,400 *	16,800 *	16,200 *	205
210	32.7	135.3	16,400 *	15,800 *	15,300 *	14,700 *	210
215	30.4	126.9	14,800 *	14,300 *	13,800 *	13,300 *	215
220	27.9	117.7	13,300 *	12,800 *	12,400 *	12,000 *	220
225	25.1	107.3	11,900 *	11,400 *	11,000 *	10,600 *	225



# Liftcrane Boom Capacities

# 2250 SERIES 3

**Boom No. 44 With Heavy Lift Top**  
**249,200 Lb. Crane Counterweight**  
**120,000 Lb. Carbody Counterweight**  
**Crawler Machine on a Static Barge**  
**0 Degree thru 3 Degree Static Machine List**  
**No Travel - 360 Degree Rating**

Oper. Radius Feet	Boom Angle Deg.	Boom Point Elev. Feet	0 Degree List Boom Capacity Pounds	1 Degree List Boom Capacity Pounds	2 Degree List Boom Capacity Pounds	3 Degree List Boom Capacity Pounds	Oper. Radius Feet
<b>250 Ft. BOOM</b>							
40	83.0	255.8	179,100 *				40
42	82.5	255.5	177,900 *				42
44	82.0	255.2	174,900 *	121,100 *			44
46	81.6	254.9	171,600 *	120,800 *			46
48	81.1	254.6	168,200 *	120,400 *			48
50	80.6	254.2	164,900 *	119,400 *	90,300 *		50
55	79.5	253.3	156,500 *	114,500 *	89,700 *	70,200 *	55
60	78.3	252.2	148,300 *	109,700 *	89,200 *	69,900 *	60
65	77.1	251.1	140,300 *	105,200 *	87,000 *	69,500 *	65
70	76.0	249.8	129,700 *	100,900 *	83,700 *	69,100 *	70
75	74.8	248.5	119,300 *	96,600 *	80,500 *	68,500 *	75
80	73.6	247.0	110,400 *	92,400 *	77,500 *	66,100 *	80
85	72.4	245.4	102,500	88,400 *	74,500 *	63,700 *	85
90	71.2	243.7	94,400	84,500 *	71,700 *	61,400 *	90
95	69.9	241.8	87,400	80,700 *	68,800 *	59,100 *	95
100	68.7	239.9	81,100	75,900	66,000 *	57,000 *	100
105	67.5	237.8	75,500	70,900	63,300 *	54,900 *	105
110	66.2	235.6	70,400	66,300	60,700 *	52,800 *	110
115	64.9	233.3	65,900	62,100	58,100 *	50,700 *	115
120	63.7	230.8	61,700	58,300	55,000	48,600 *	120
125	62.4	228.2	58,000	54,900	51,800	46,600 *	125
130	61.1	225.4	54,500	51,700	48,900	44,700 *	130
135	59.7	222.5	51,300	48,700	46,200	42,700 *	135
140	58.4	219.4	48,400	46,000	43,600	40,800 *	140
145	57.0	216.2	45,700	43,500	41,300	39,000 *	145
150	55.6	212.7	43,100	41,100	39,100	37,200 *	150
155	54.2	209.1	40,800	38,900	37,000	35,200	155
160	52.8	205.4	38,600	36,900	35,100	33,400	160
165	51.3	201.4	36,000 *	34,600 *	33,200 *	31,800	165
170	49.8	197.2	33,600 *	32,200 *	30,900 *	29,700 *	170
175	48.3	192.7	31,200 *	30,000 *	28,800 *	27,700 *	175
180	46.7	188.0	29,100 *	27,900 *	26,800 *	25,800 *	180
185	45.1	183.1	27,000 *	26,000 *	25,000 *	24,000 *	185
190	43.4	177.8	25,000 *	24,100 *	23,200 *	22,300 *	190
195	41.7	172.2	23,200 *	22,300 *	21,500 *	20,700 *	195
200	40.0	166.3	21,400 *	20,600 *	19,800 *	19,100 *	200
205	38.1	160.0	19,700 *	19,000 *	18,300 *	17,600 *	205
210	36.2	153.2	18,100 *	17,400 *	16,800 *	16,200 *	210
215	34.2	146.0	16,600 *	16,000 *	15,400 *	14,800 *	215
220	32.0	138.1	15,200 *	14,500 *	14,000 *	13,500 *	220
225	29.7	129.5	13,800 *	13,100 *	12,700 *	12,300 *	225
230	27.3	120.1	12,400 *	11,800 *	11,400 *	11,000 *	230



# Liftcrane Boom Capacities

# 2250 SERIES 3

**Boom No. 44 With Heavy Lift Top**  
**249,200 Lb. Crane Counterweight**  
**120,000 Lb. Carbody Counterweight**  
**Crawler Machine on a Static Barge**  
**0 Degree thru 3 Degree Static Machine List**  
**No Travel - 360 Degree Rating**

Oper. Radius Feet	Boom Angle Deg.	Boom Point Elev. Feet	0 Degree List Boom Capacity Pounds	1 Degree List Boom Capacity Pounds	2 Degree List Boom Capacity Pounds	3 Degree List Boom Capacity Pounds	Oper. Radius Feet
<b>260 Ft. BOOM</b>							
42	82.8	265.6	169,400 *				42
44	82.4	265.3	166,100 *				44
46	81.9	265.0	162,800 *	110,200 *			46
48	81.5	264.7	159,700 *	109,800 *			48
50	81.0	264.4	156,500 *	109,500 *	81,700 *		50
55	79.9	263.5	148,500 *	108,400 *	81,200 *	63,000 *	55
60	78.8	262.5	140,700 *	103,700 *	80,700 *	62,700 *	60
65	77.6	261.4	133,100 *	99,200 *	80,200 *	62,400 *	65
70	76.5	260.1	125,900 *	94,900 *	78,800 *	62,000 *	70
75	75.4	258.8	117,200 *	90,800 *	75,600 *	61,700 *	75
80	74.2	257.4	108,300 *	86,800 *	72,600 *	61,300 *	80
85	73.1	255.9	100,500 *	82,900 *	69,600 *	59,500 *	85
90	71.9	254.2	93,600 *	79,100 *	66,800 *	57,100 *	90
95	70.7	252.5	86,800 *	75,500 *	64,100 *	54,900 *	95
100	69.6	250.6	80,500 *	72,000 *	61,400 *	52,700 *	100
105	68.4	248.6	74,900 *	68,600 *	58,800 *	50,600 *	105
110	67.2	246.5	69,800 *	65,300 *	56,200 *	48,600 *	110
115	66.0	244.3	65,300 *	61,300 *	53,700 *	46,600 *	115
120	64.8	241.9	61,100 *	57,600 *	51,300 *	44,600 *	120
125	63.5	239.4	57,300 *	54,100 *	48,900 *	42,700 *	125
130	62.3	236.8	53,900 *	50,900 *	46,600 *	40,800 *	130
135	61.0	234.0	50,700 *	48,000 *	44,400 *	38,900 *	135
140	59.8	231.1	47,800 *	45,300 *	42,200 *	37,100 *	140
145	58.5	228.1	45,000 *	42,700 *	40,100 *	35,300 *	145
150	57.1	224.8	42,500 *	40,400 *	38,000 *	33,500 *	150
155	55.8	221.4	40,200 *	38,200 *	36,000 *	31,800 *	155
160	54.5	217.9	38,000 *	36,100 *	34,100 *	30,100 *	160
165	53.1	214.1	35,600 *	34,100 *	32,200 *	28,400 *	165
170	51.7	210.2	33,200 *	31,700 *	30,300 *	26,800 *	170
175	50.2	206.0	30,800 *	29,500 *	28,200 *	25,200 *	175
180	48.8	201.7	28,600 *	27,400 *	26,300 *	23,700 *	180
185	47.3	197.1	26,600 *	25,500 *	24,400 *	22,100 *	185
190	45.8	192.2	24,600 *	23,600 *	22,600 *	20,600 *	190
195	44.2	187.1	22,800 *	21,800 *	20,900 *	19,100 *	195
200	42.6	181.7	21,000 *	20,100 *	19,300 *	17,600 *	200
205	40.9	176.0	19,300 *	18,500 *	17,800 *	16,200 *	205
210	39.1	169.9	17,700 *	17,000 *	16,300 *	14,700 *	210
215	37.3	163.4	16,200 *	15,500 *	14,900 *	13,300 *	215
220	35.4	156.4	14,700 *	14,100 *	13,500 *	11,900 *	220
225	33.5	149.0	13,400 *	12,800 *	12,100 *	10,500 *	225
230	31.4	140.9	12,000 *	11,400 *	10,600 *	9,100 *	230
235	29.1	132.1	10,800 *	10,200 *	9,000 *	7,600 *	235
240	26.7	122.4	9,500 *	8,800 *	7,400 *	6,200 *	240



# Liftcrane Boom Capacities

# 2250 SERIES 3

**Boom No. 44 With Heavy Lift Top**  
**249,200 Lb. Crane Counterweight**  
**120,000 Lb. Carbody Counterweight**  
**Crawler Machine on a Static Barge**  
**0 Degree thru 3 Degree Static Machine List**  
**No Travel - 360 Degree Rating**

Oper. Radius Feet	Boom Angle Deg.	Boom Point Elev. Feet	0 Degree List Boom Capacity Pounds	1 Degree List Boom Capacity Pounds	2 Degree List Boom Capacity Pounds	3 Degree List Boom Capacity Pounds	Oper. Radius Feet
<b>270 Ft. BOOM</b>							
44	82.6	275.4	153,900 *				44
46	82.2	275.1	151,800 *				46
48	81.8	274.8	148,900 *	95,100 *			48
50	81.3	274.5	146,100 *	94,800 *			50
55	80.3	273.6	139,000 *	94,100 *	69,300 *		55
60	79.2	272.7	131,900 *	93,400 *	68,900 *	52,700 *	60
65	78.1	271.6	125,000 *	92,200 *	68,400 *	52,400 *	65
70	77.0	270.4	118,300 *	88,300 *	68,000 *	52,100 *	70
75	75.9	269.2	111,900 *	84,500 *	67,500 *	51,800 *	75
80	74.8	267.8	105,800 *	80,800 *	67,100 *	51,500 *	80
85	73.7	266.4	98,600 *	77,100 *	64,400 *	51,200 *	85
90	72.6	264.8	91,700 *	73,600 *	61,800 *	50,900 *	90
95	71.5	263.1	85,600 *	70,200 *	59,200 *	50,400 *	95
100	70.4	261.3	79,900 *	66,800 *	56,700 *	48,400 *	100
105	69.2	259.4	74,300 *	63,600 *	54,200 *	46,400 *	105
110	68.1	257.4	69,300 *	60,500 *	51,800 *	44,500 *	110
115	66.9	255.3	64,700 *	57,600 *	49,400 *	42,600 *	115
120	65.8	253.0	60,500 *	54,700 *	47,100 *	40,700 *	120
125	64.6	250.6	56,800 *	51,900 *	44,800 *	38,900 *	125
130	63.4	248.1	53,300 *	49,300 *	42,700 *	37,100 *	130
135	62.2	245.5	50,100 *	46,700 *	40,500 *	35,300 *	135
140	61.0	242.7	47,200 *	44,200 *	38,500 *	33,500 *	140
145	59.8	239.8	44,500 *	41,800 *	36,500 *	31,800 *	145
150	58.5	236.7	41,900 *	39,500 *	34,500 *	30,200 *	150
155	57.3	233.5	39,600 *	37,300 *	32,600 *	28,500 *	155
160	56.0	230.1	37,400 *	35,200 *	30,800 *	26,900 *	160
165	54.7	226.6	35,300 *	33,100 *	28,900 *	25,400 *	165
170	53.4	222.9	32,800 *	31,000 *	27,200 *	23,800 *	170
175	52.0	219.0	30,500 *	29,100 *	25,500 *	22,300 *	175
180	50.6	214.9	28,300 *	27,000 *	23,800 *	20,800 *	180
185	49.2	210.6	26,200 *	25,000 *	22,200 *	19,400 *	185
190	47.8	206.1	24,300 *	23,200 *	20,600 *	17,900 *	190
195	46.3	201.3	22,400 *	21,400 *	19,000 *	16,500 *	195
200	44.8	196.3	20,700 *	19,700 *	17,400 *	15,100 *	200
205	43.3	191.1	19,000 *	18,100 *	15,900 *	13,800 *	205
210	41.7	185.5	17,400 *	16,600 *	14,400 *	12,400 *	210
215	40.1	179.6	15,900 *	15,100 *	13,000 *	11,100 *	215
220	38.4	173.3	14,400 *	13,500 *	11,500 *	9,800 *	220
225	36.6	166.6	13,000 *	11,900 *	10,100 *	8,500 *	225
230	34.8	159.5	11,700 *	10,300 *	8,700 *	7,200 *	230
235	32.8	151.9	10,400 *	8,800 *	7,300 *	5,900 *	235
240	30.8	143.6	9,200 *	7,300 *	5,900 *	4,600 *	240
245	28.6	134.6	8,100 *	5,700 *	4,500 *		245
250	26.2	124.7	6,400 *	4,200 *			250



# Liftcrane Boom Capacities

# 2250 SERIES 3

**Boom No. 44 With Heavy Lift Top**  
**249,200 Lb. Crane Counterweight**  
**120,000 Lb. Carbody Counterweight**  
**Crawler Machine on a Static Barge**  
**0 Degree thru 3 Degree Static Machine List**  
**No Travel - 360 Degree Rating**

Oper. Radius Feet	Boom Angle Deg.	Boom Point Elev. Feet	0 Degree List Boom Capacity Pounds	1 Degree List Boom Capacity Pounds	2 Degree List Boom Capacity Pounds	3 Degree List Boom Capacity Pounds	Oper. Radius Feet
<b>280 Ft. BOOM</b>							
44	82.9	285.5	142,700 *				44
46	82.5	285.2	142,000 *				46
48	82.1	284.9	141,300 *				48
50	81.7	284.6	138,600 *	86,300 *			50
55	80.6	283.8	130,900 *	85,600 *	62,700 *		55
60	79.6	282.9	129,100 *	84,900 *	62,300 *	47,200 *	60
65	78.5	281.8	127,700 *	84,200 *	61,800 *	46,900 *	65
70	77.5	280.7	125,000 *	83,600 *	61,400 *	46,600 *	70
75	76.4	279.5	114,700 *	82,900 *	60,900 *	46,300 *	75
80	75.4	278.2	105,800 *	81,000 *	60,600 *	46,000 *	80
85	74.3	276.8	98,000 *	79,100 *	60,300 *	45,700 *	85
90	73.2	275.3	91,100 *	77,300 *	60,000 *	45,500 *	90
95	72.2	273.7	84,900 *	75,600 *	59,700 *	45,300 *	95
100	71.1	271.9	79,500 *	73,900 *	58,600 *	45,100 *	100
105	70.0	270.1	74,300	69,100	57,300 *	45,000 *	105
110	68.9	268.2	69,200	64,500	56,100 *	44,800 *	110
115	67.8	266.1	64,600	60,400	54,800 *	44,600 *	115
120	66.7	264.0	60,500	56,600	52,900	43,700 *	120
125	65.6	261.7	56,700	53,200	49,800	42,700 *	125
130	64.4	259.3	53,200	50,000	46,900	41,700 *	130
135	63.3	256.8	50,000	47,000	44,200	40,700 *	135
140	62.1	254.1	47,100	44,300	41,700	39,200	140
145	61.0	251.4	44,300	41,800	39,400	37,000	145
150	59.8	248.5	41,500 *	39,500	37,200	35,000	150
155	58.6	245.4	38,500 *	37,300	35,100	33,100	155
160	57.4	242.2	35,800 *	35,200	33,200	31,400	160
165	56.1	238.8	33,200 *	32,800 *	31,500	29,700	165
170	54.9	235.3	30,800 *	30,400 *	29,800	28,100	170
175	53.6	231.6	28,500 *	28,200 *	27,700 *	26,300 *	175
180	52.3	227.8	26,400 *	26,000 *	25,700 *	24,500 *	180
185	51.0	223.7	24,400 *	24,000 *	23,800 *	22,700 *	185
190	49.7	219.5	22,500 *	22,100 *	22,100 *	21,000 *	190
195	48.3	215.1	20,700 *	20,300 *	20,400 *	19,400 *	195
200	46.9	210.4	19,000 *	18,700 *	18,700 *	17,800 *	200
205	45.5	205.5	17,400 *	17,100 *	17,100 *	16,400 *	205
210	44.0	200.3	15,900 *	15,500 *	15,600 *	14,900 *	210
215	42.5	194.9	14,400 *	14,100 *	14,100 *	13,600 *	215
220	40.9	189.2	13,000 *	12,700 *	12,700 *	12,300 *	220
225	39.3	183.1	11,700 *	11,300 *	11,400 *	11,100 *	225
230	37.6	176.7	10,400 *	10,100 *	10,100 *	9,900 *	230
235	35.9	169.9	9,200 *	8,900 *	8,900 *	8,800 *	235
240	34.1	162.6	8,000 *	7,700 *	7,700 *	7,700 *	240
245	32.2	154.7	6,900 *	6,500 *	6,500 *	6,500 *	245
250	30.2	146.3	5,800 *	5,500 *	5,500 *	5,500 *	250
255	28.0	137.1	4,700 *	4,400 *	4,400 *	4,400 *	255