



# LIEBHERR MINING EQUIPMENT CO



## Liebherr P 994 Attachments

<u>Boom</u>		<u>Stick</u>		<u>Bucket</u>		<u>Maximum Digging Depth Below Deck Level</u>		<u>Digging Force</u>		<u>Breakout Force</u>	
ft-in	m	ft-in	m	cuyd	m <sup>3</sup>	ft-in	m	lbs.	kN	lbs.	kN
45' 11"	14.0	13' 1"	4.0	1.8	9.0	47' 7/8"	14.5	148,380	660	169,290	753
45' 11"	14.0	18' 4"	5.6	9.4	7.2	52' 10"	16.1	119,160	530	169,290	753
45' 11"	14.0	26' 3"	8.0	7.5	5.7	60' 0"	18.3	87,680	390	122,530	545
52' 6"	15.0	13' 1"	4.0	9.4	7.2	53' 10"	16.4	148,380	660	169,290	753
52' 6"	15.0	18' 4"	5.6	7.5	5.7	58' 9"	17.9	119,160	530	169,290	753
52' 6"	15.0	26' 3"	8.0	5.8	4.5	65' 11"	20.1	87,680	390	122,530	545
62' 4"	19.0	13' 1"	4.0	7.5	5.7	62' 8"	19.1	148,380	660	169,290	753
62' 4"	19.0	18' 4"	5.6	5.9	4.5	68' 3"	20.8	119,160	530	169,290	753
62' 4"	19.0	26' 3"	8.0	4.8	3.7	75' 9"	23.1	87,680	390	122,530	545
62' 4"	19.0	31' 2"	9.5	4.3	3.5	78' 9"	24.0	71,940	320	91,050	405
72' 2"	22.0	44' 3"	13.5	2.9	2.2	96' 5"	29.4	43,840	195	97,570	434

\* Additional attachment combinations available upon request

\*\* Digging force between deck level and walk-line must be subtracted from the maximum digging depth.

# Technical Data

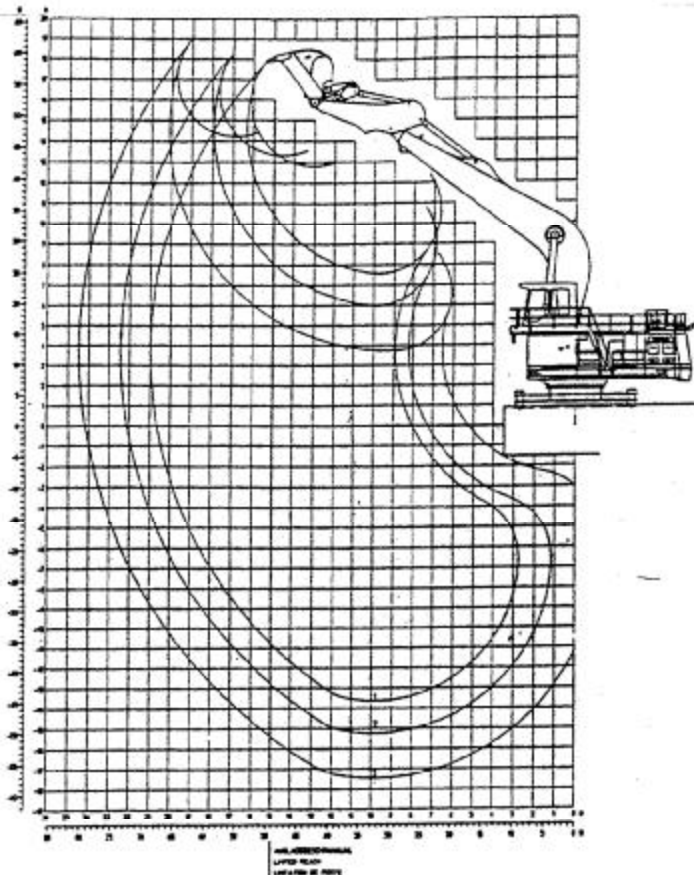
## Hydraulic Excavator

### Backhoe Attachment

#### with Gooseneck boom 14,00 m

# P 994

Litronic



To order a complete machine you need the following Id.N

- Basic machine with elastic mount and base plate
- Hoist cylinders 9754321
- Gooseneck boom 14,00 m 9765377
- Stick 4,00 m 9765452  
5,60 m 9766026  
8,00 m 9387110
- Bucket size as needed see below

#### Digging envelope

- 1) with stick 4,00 m
- 2) with stick 5,60 m
- 3) with stick 8,00 m

#### Buckets

for stick length m	Cutting width mm	Capacity SAE heaped m <sup>3</sup>	Capacity SAE struck m <sup>3</sup>	Weight kg	Id. No	Max. digging depth m	Max digging force kN	Max break-out force kN	Mini dump height m	
									Bucket extended	Bucket curled
4,00	2800	9,00	7,20	10000	9330283	13,60	660	753	7,50	9,10
5,60	2300	7,20	5,70	8450	9567481	15,20	530	753	5,90	7,50
8,00	2000 <sup>1)</sup>	5,70	4,30	6900	9355834	17,40	390	545	3,70	5,00

All buckets have sealed bushings.

Buckets are suitable for material with a specific weight of 1800 kg / m<sup>3</sup> and are limited in reach (see digging envelope)

1) Bucket from 992

Note :

- Bucket capacities were determined for the respective bucket weights listed above. Other bucket weights would consequently influence the buckets capacities.
- Additional components mounted to the attachment, e.g. bucket cylinder guards, etc., will reduce the bucket capacity.

Maximum Digging Force = 390 kN = 87,680 lbs

Maximum Breakout Force = 545 kN = 122,530 lbs.