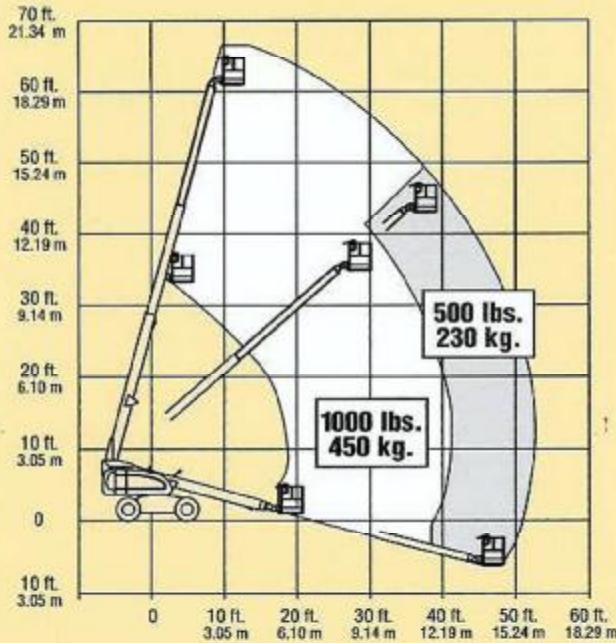


JLG 600S



REACH SPECIFICATIONS

Platform Height	60 ft. (18.29 m)
Horizontal Outreach	49 ft. 6 in. (15.09 m)
Swing	360 Degrees Continuous
Platform Capacity—Restricted	500/1000 lbs. (230/450 kg)
Platform Capacity—Unrestricted	500 lbs. (230 kg)
Platform Rotator	160 Degrees Hydraulic



DIMENSIONAL DATA

A. Platform Size	36 in. x 72 in. (0.91 m x 1.83 m)
B. Overall Width	8 ft. in. (2.44 m)
C. Tailswing (working condition)	3 ft. 9 in. (1.14 m)
D. Stowed Height	8 ft. 5 in. (2.57 m)
E. Stowed Length	27 ft. 11 in. (8.51 m)
F. Wheelbase	8 ft. 1 in. (2.46 m)
G. Ground Clearance	12 in. (30 cm)
Gross Vehicle Weight	22,500 lbs. (10,208 kg)
Max. Ground Bearing Pressure	60 psi (4.2 kg/cm ²)
Max. Tire Load	11,800 lbs. (5,351 kg)

CHASSIS

Drive Speed 2WD	4.5 MPH (7.2 kph)
Drive Speed 4WD	4.0 MPH (6.4 kph)
Gradeability 2WD	.30%
Gradeability 4WD	.45%
Tires	15 x 19.5 Lug Tread
Axle Oscillation (optional)	8 in. (20.4 cm)
Turning Radius, (Inside/Outside)	
600S 2WS	12 ft. (3.66 m)/17 ft. 9 in. (5.41 m)
600S 4WS	5 ft. 5 in. (1.65 m)/11 ft. 4 in. (3.45 m)

POWER SOURCE

Dual Fuel Engine, Ford LRG-425	.82 hp (61 kW)
Diesel Engine, Deutz F4M1011F	.65 hp (48 kW)
Fuel Tank Capacity	.39 gallons (147.6 L)
Hydraulic Reservoir	.31 gallons (117.3 L)
Auxiliary Power	12V DC