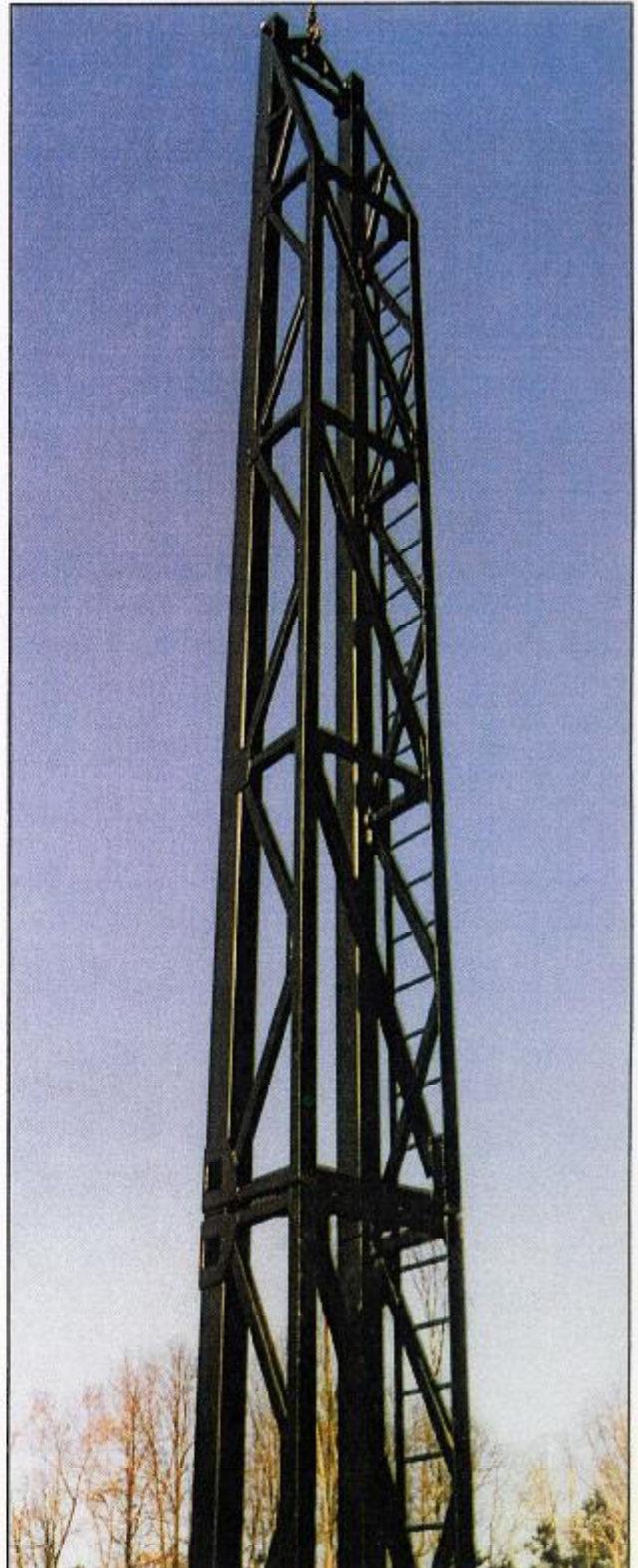
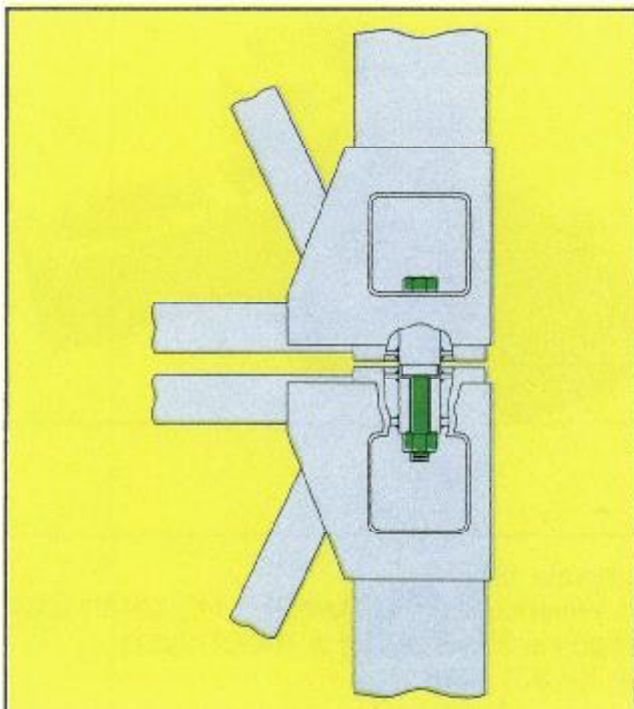




# BOX LEADS ORIGINAL ICE DESIGN

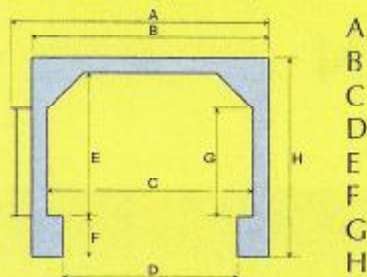
ICE original design leads are available for sale or rent in four sizes from 22" to 36" to fit all standard hammer designs and project requirements. These original design leads feature:

- ♦ Clean lined design with 100% mitered structural tube cross bracing to eliminate wire rope snags.
- ♦ Heavy wall high strength structural tube front guide rails for abrasion resistance and long life.
- ♦ High strength and braced rear angles are structurally matched with front rails to provide equal moment capacity for both fore and aft batter conditions.
- ♦ 100% structural tube yokes are corner reinforced to maintain front guide rail spacing.
- ♦ Rigid four bolt connections provide maximum stability and quick set-up. Male-female alignment / shear connectors ensure guide rail continuity at joints.
- ♦ Precision fabricated in production jigs to ensure accurate connection alignment on site.
- ♦ Available in 8' increments in swinging, fixed and sliding configurations.
- ♦ High strength to weight ratio for crane efficiency.



## SPECIFICATIONS - ORIGINAL ICE DESIGN

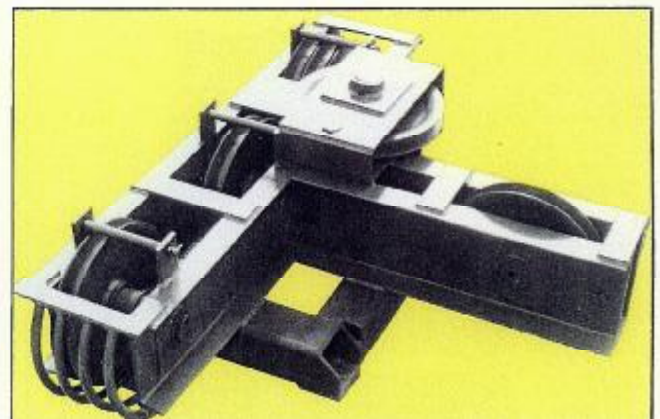
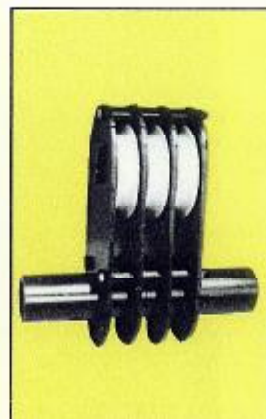
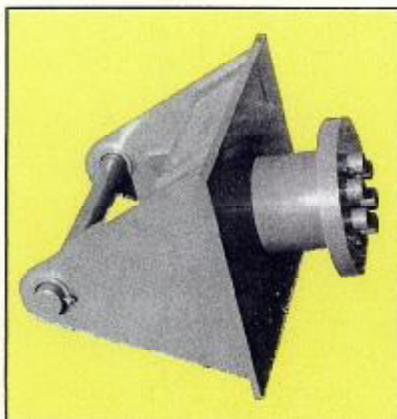
Dimensions (inches):



	22" Leads	26" Leads	32" Leads	36" Leads
A	38.5	43.5	49.5	53.5
B	34.5	39.5	45.5	49.5
C	29	32.5	38.5	42.5
D	22.5	26.5	32.5	36.5
E	18.5	19	30.5	30.5
F	4	8	8	8
G	11.5	14	27	27
H	25	31	44.5	44.5

Weights (lbs):

32' Tapered Top with Lifting Bail	2,310	3,320	4,680	5,330
20' Stab Point Bottom	1,420	2,060	2,905	3,305
4' Stab Point Bottom	n/a	470	610	n/a
8' Intermediate Section	750	1,075	1,515	1,725
16' Intermediate Section	1270	1,860	2,620	2,975
40' Intermediate Section	n/a	4,650	6,550	7,438
40' Fixed Boom Point Section	n/a	5,465	7,745	8,744
Sliding Rails (add to sections)	n/a	44 / lf	44 / lf	44 / lf
Sliding Boom Point Box	n/a	1,500	2,310	2,600
Sliding Lead Hanger Box (3 sheave)	n/a	1,150	1,650	2,040
Sliding Spotter Box	n/a	400	490	550
Universal Boom Point Connector (2 axis)	n/a	1,150	1,150	1,150
Universal Boom Point Connector (3 axis)	n/a	2,200	2,200	2,200
Rooster Sheave Assembly (3 line)	n/a	630	630	630
Headblock Assembly (4 sheave)	n/a	1,070	1,200	1,250
Headblock Assembly (6 sheave)	n/a	1,200	1,330	1,380
Headblock with Side Auger Bracket	n/a	1,570	1,750	1,850
Lead Side Auger Rail (add to sections)	n/a	33 / lf	33 / lf	33 / lf



**PHOTOS:** Left-Universal 2 axis boom point connector  
Center-Rooster sheave assembly  
Right-Headblock with optional auger bracket



**INTERNATIONAL  
CONSTRUCTION  
EQUIPMENT, INC.**

Corporate offices:  
301 Warehouse Drive, Matthews, NC 28105 USA  
Telephone 800 438-9281 & 704 821-8200  
Fax 704 821-6448