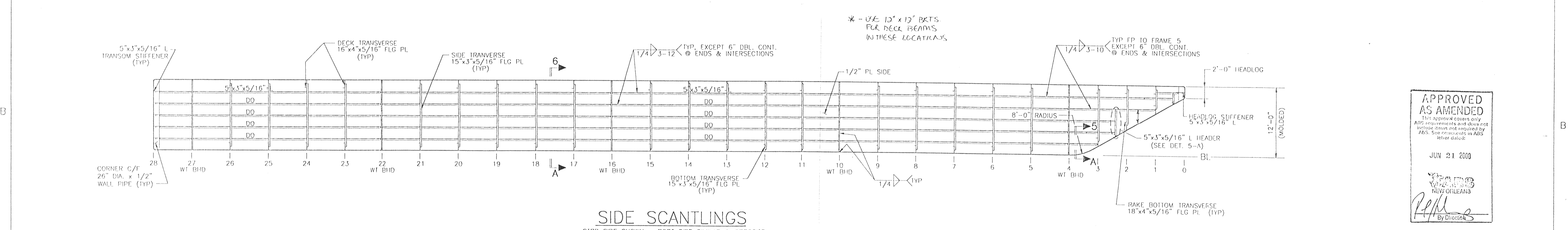
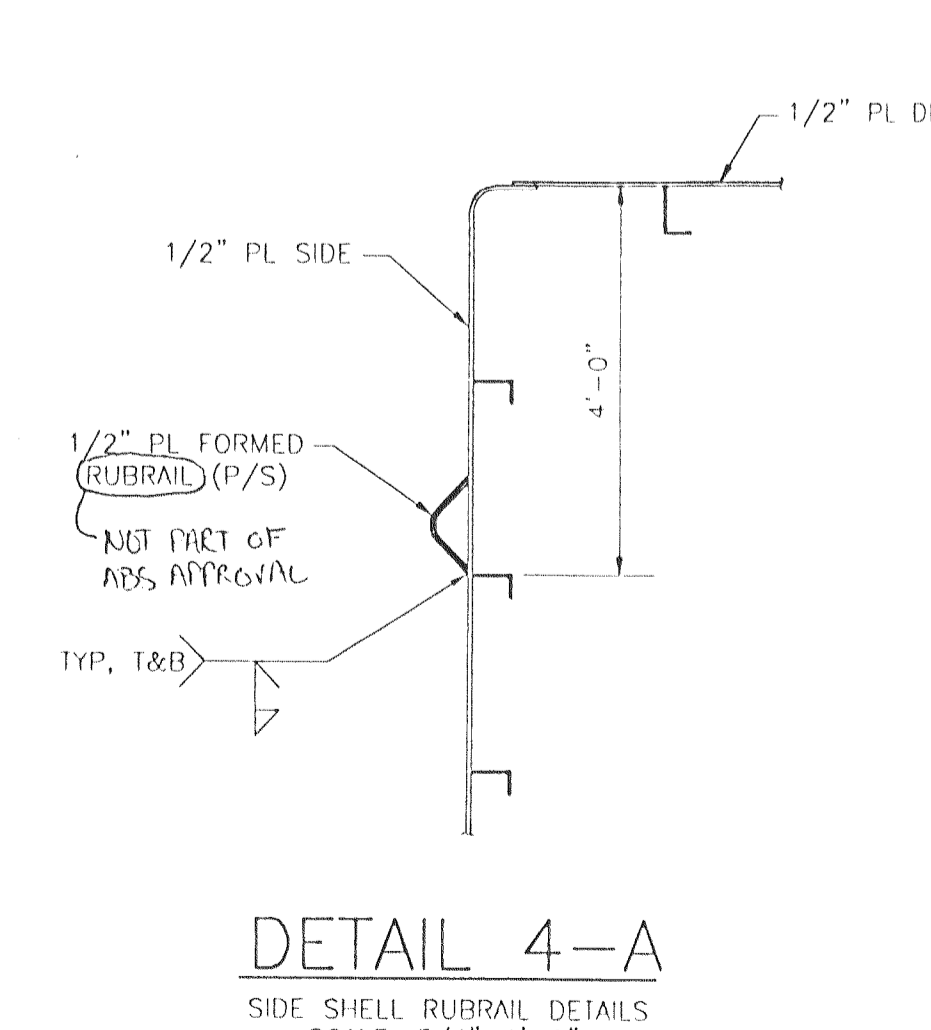
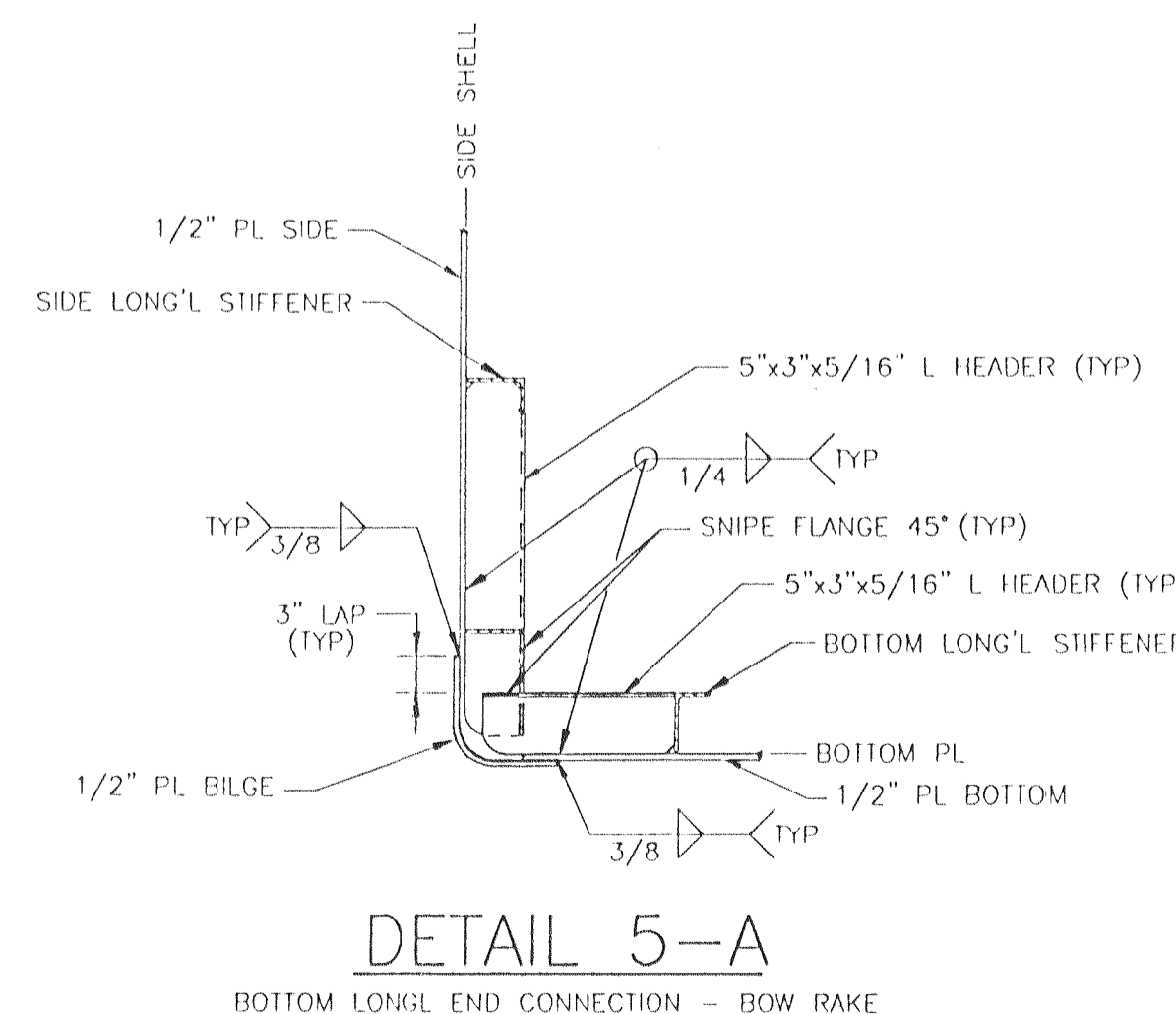
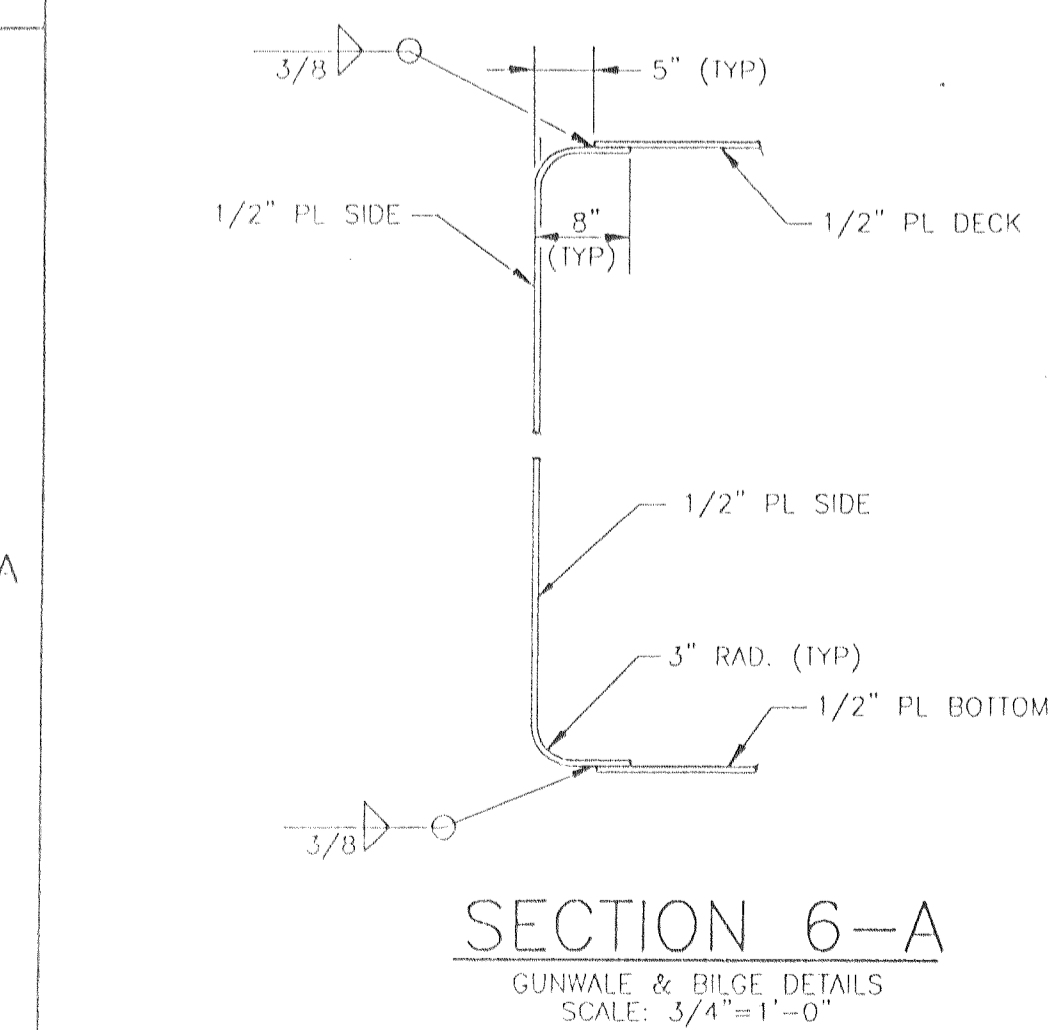


**DECK & BOTTOM SCANTLINGS**



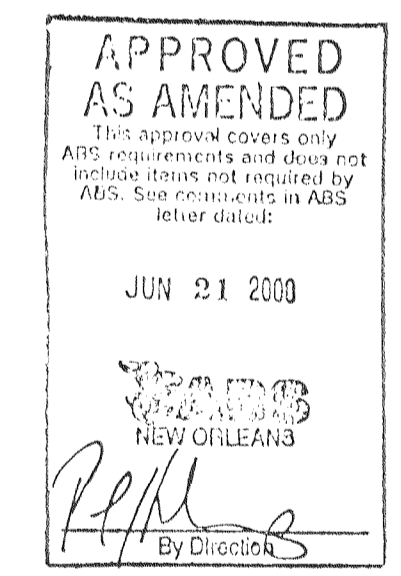
**SIDE SCANTLINGS**

SIBD SIDE SHOWN - PORT SIDE SIMILAR & OPPOSITE



**CLASSIFICATION:**  
TO CLASS: **NA1** BARGE

- GENERAL NOTES:**
1. DECK DESIGNED FOR MAXIMUM UNIFORM DRY LOAD = 2,000 PSF.
  2. ALL COMPARTMENTS ARE VOIDS.
  3. MATERIALS TO SURVEYOR'S SATISFACTION.
  4. FIT-UP & WELDING TO SATISFACTION OF ATTENDING SURVEYOR.



CONRAD Shipyard, Inc.  
1501 FRONT STREET POST OFFICE BOX 790  
MORGAN CITY, LOUISIANA 70381

**180'x54'x12'-0" SPUD BARGE** SEC 180-5

**SCANTLINGS PLAN**

|                 |                        |             |        |            |
|-----------------|------------------------|-------------|--------|------------|
| ABS APPROVAL    | DATE NO. C-687 & C-688 | DRAWN BY    | BIJ    | DATE       |
| USCG APPROVAL   | NO. 687 & 688          | APPROVED BY |        | SCALE      |
| USCG SERIAL NO. | DRAWING NO. S-1        | SHEET       | 1 of 1 | 1/8"=1'-0" |