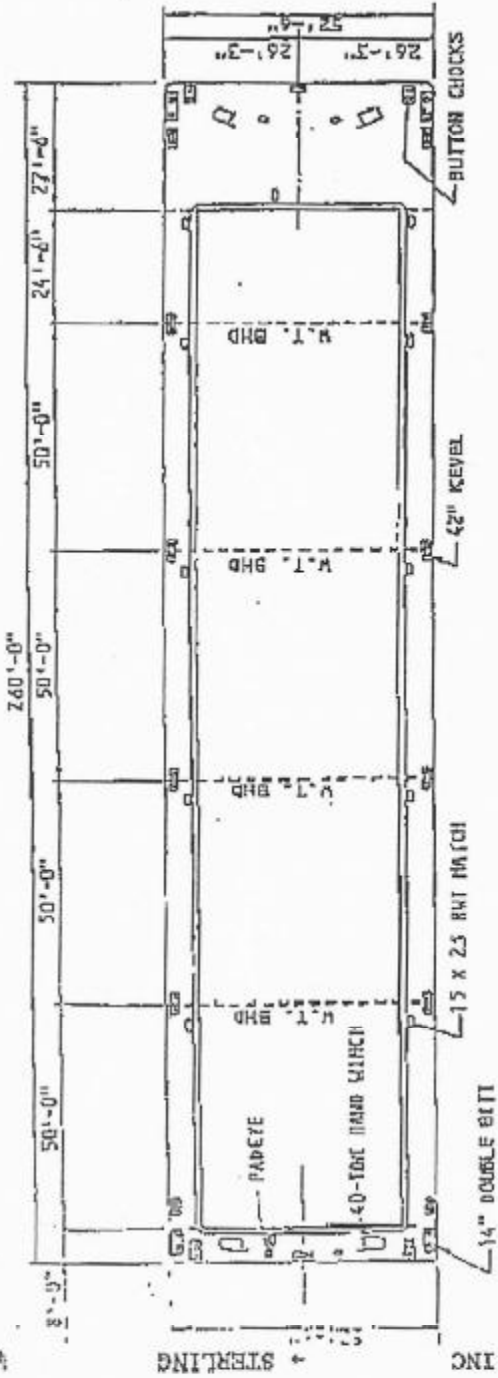


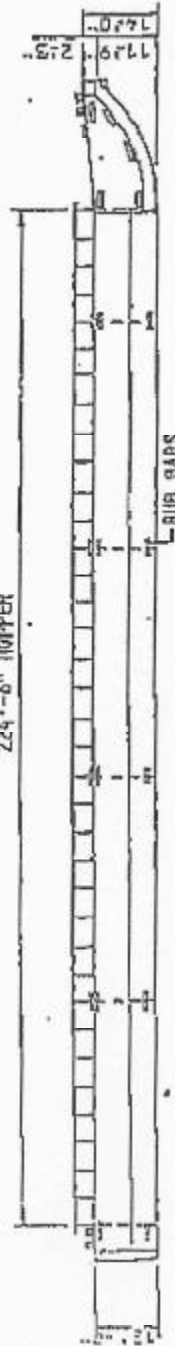
Attachment 6: Barge Schematic

002

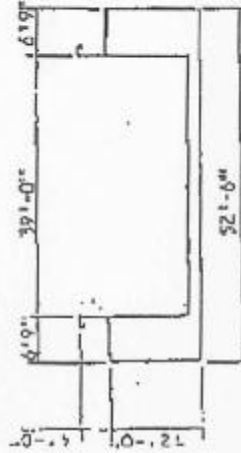


PLAN

224'-6" HOPPER



PROFILE



SECTION

TOTAL HOPPER VOLUME = 127,660 CU. FT.
LIMIT SHIP WEIGHT = 585 S. TONS

BERGERON HULLS 1371 - 1406

BERGERON INDUSTRIES, INC.
POST OFFICE BOX 38
ST. BARRIS, LA 70085

OPEN HOPPER BARGE
260' X 52'-6" X 12'-0"
CAPACITY 614H

REEL DRAFT (FEET)	DISPLACEMENT (S.T.F.M.)	CARGO DWT (S.T.F.M.)
11'-6"	5260	4755
11'-0"	5529	3964
10'-6"	6318	3733
10'-0"	7106	3521
9'-6"	8096	3311
9'-0"	9085	3100
8'-6"	10075	2890
8'-0"	11065	2680
7'-6"	12055	2470
7'-0"	13047	2262
6'-6"	14038	2055
6'-0"	15030	1845
5'-6"	16023	1638
5'-0"	17016	1431
4'-6"	18010	1222
4'-0"	19005	1020
3'-6"	19997	816
3'-0"	20995	612
2'-0"	21993	410
1'-5 3/4"	22990	208
1'-5 3/4"	23985	0

04/19/2002 09:08 FAX 6172884885

JAY CASHMAN, INC STERLING