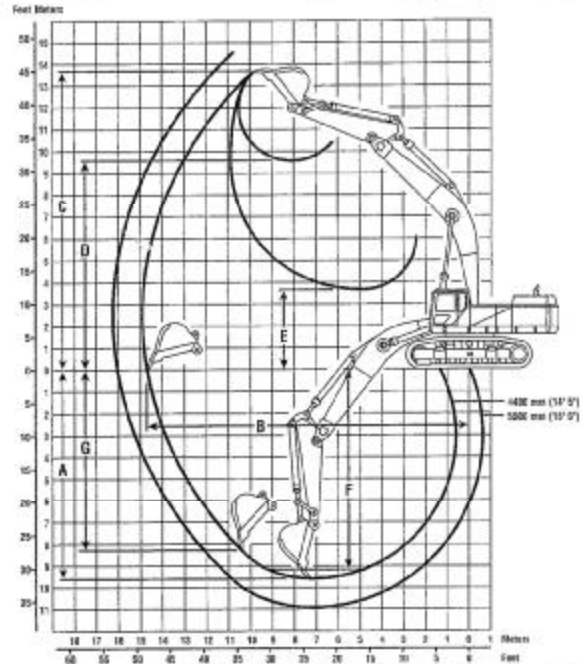


375/375 L

375 Reach Excavator Working Ranges

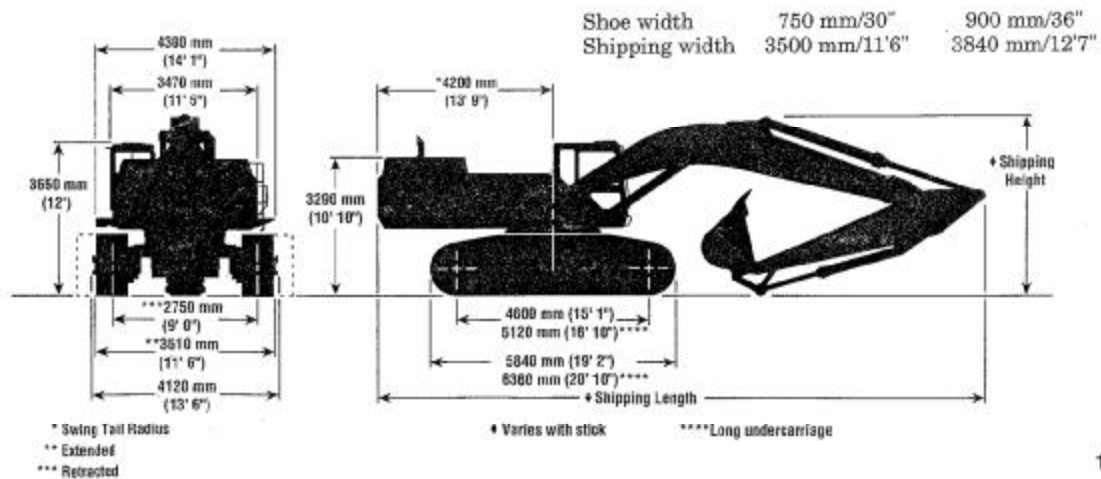


	R5.5H	R4.4H
Stick	5500 mm (18'1")	4400 mm (14'5")
Bucket	2.4 m³ (3.25 yd³)	3.2 m³ (4.25 yd³)
A Maximum digging depth	10 923 mm (35'10")	9680 mm (31'7")
B Maximum reach at ground level	16 040 mm (52'7")	14 660 mm (48'1")
C Maximum cutting height	14 575 mm (47'10")	13 520 mm (44'4")
D Maximum loading height	10 269 mm (33'8")	9660 mm (31'8")
E Minimum loading height	2382 mm (7'9")	3670 mm (12'1")
F Maximum digging depth at 2440 mm (8') level bottom	10 827 mm (35'6")	9160 mm (30')
G Maximum vertical wall digging depth	9412 mm (30'11")	8260 mm (27'1")
Bucket forces	27 758 kg (61,197 lb)	30 200 kg (66,580 lb)
Stick forces	20 838 kg (45,940 lb)	25 600 kg (56,540 lb)



Dimensions (approximate)

	R5.5H	R4.4H
Stick	5500 mm (18'1")	4400 mm (14'5")
Shipping height	5310 mm (17'5")	4690 mm (15'5")
Shipping length	14 650 mm (48'1")	14 710 mm (48'3")



ARRANGEMENTS

375/375 L General Purpose Excavator

The Caterpillar General Purpose Excavator is designed to allow flexibility to tailor the digging envelope and lift capacities where reach and depth are not primary considerations.

- General Purpose boom, measuring 8400 mm (27'6") used where a balance between digging envelope and force levels/bucket capacity are required. Most common in general construction applications.
- Choice of Four sticks allows general purpose boom to meet machine's potential in a wide range of applications.
 - R5.5H stick, 5500 mm (18'1") long, maximizes working envelope and uses "H" family buckets.
 - R4.4H stick, at 4400 mm (14'5") also uses "H" family buckets, with larger bucket capacities..
 - R3.4J stick, 3400 mm(11'2") offers a good mix of reach, depth, bucket capacity, forces and lifting capacity. Uses "J" family buckets.
 - R2.9J stick, 2900 mm (9'7") offers the advantages of reach depth and bucket capacity but with greater forces than the R3.4J stick. Also uses "J" family buckets.