

Engine

Engine Model	Caterpillar C18 ATAAC	
Net Flywheel Power	382 kW	513 hp
ISO 9249	382 kW	513 hp
SAE J1349	382 kW	513 hp
EEC 80/1269	382 kW	513 hp
Bore	145 mm	5.71 in
Stroke	171 mm	7.2 in
Displacement	18.1 L	1,106 in ³

- The 385C L meets worldwide Tier 3 emission requirements.
- Net power advertised is the power available at the flywheel when the engine is equipped with fan, air cleaner, muffler and alternator.
- No engine power derating required below 2300 m (7,500 ft) altitude.

Weights

Operating Weight – Long Undercarriage	84 980 kg	187,360 lb
---------------------------------------	-----------	------------

- General Purpose Boom, R4.4 (14'5") stick, 1678 mm (66") Bucket, and 900 mm (36") shoes.

Track

Standard w/Long Undercarriage	900 mm	36 in
Optional for Long Undercarriage	750 mm	30 in
Number of Shoes Each Side – Long Undercarriage	51	
Number of Track Rollers Each Side – Long Undercarriage	9	
Number of Carrier Rollers Each Side	3	

Swing Mechanism

Swing Speed	6.5 RPM	
Swing Torque	260 kN·m	191,770 lb ft

Drive

Maximum Travel Speed	4.4 kph	2.8 mph
Maximum Drawbar Pull – Long Undercarriage	592 kN	133,090 lb

Hydraulic System

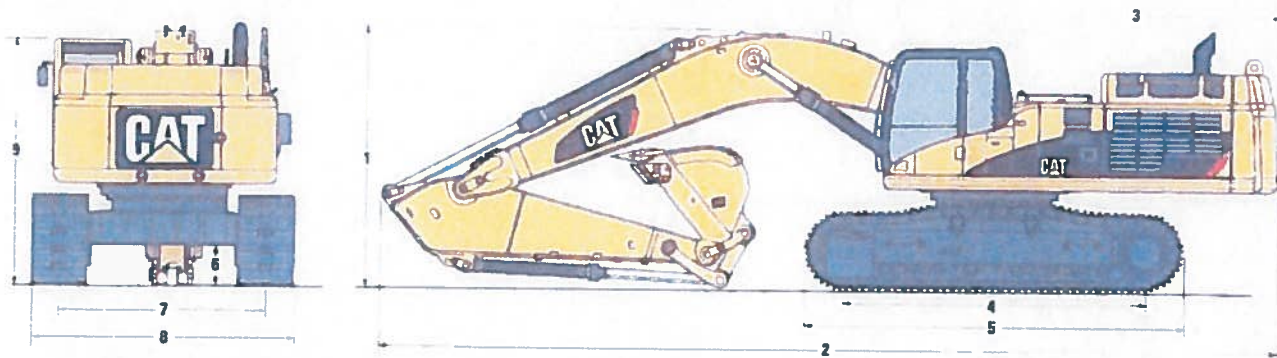
Main System – Maximum Flow (Total)	980 L/min	259 gal/min
Swing System – Maximum Flow	450 L/min	119 gal/min
Maximum Pressure – Equipment – Normal	32 000 kPa	4,640 psi
Maximum Pressure – Equipment – Heavy Lift	35 000 kPa	5,080 psi
Maximum Pressure – Travel	35 000 kPa	5,080 psi
Maximum Pressure – Swing	26 000 kPa	3,770 psi
Pilot System – Maximum Flow	90 L/min	24 gal/min
Pilot System – Maximum Pressure	4120 kPa	600 psi
Boom Cylinder – Bore	210 mm	8.27 in
Boom Cylinder – Stroke	1967 mm	77.4 in
Stick Cylinder – Bore	220 mm	8.66 in
Stick Cylinder – Stroke	2262 mm	89.1 in
HB Family Bucket Cylinder – Bore	200 mm	7.87 in
HB Family Bucket Cylinder – Stroke	1451 mm	57.1 in
JB Family Bucket Cylinder – Bore	220 mm	8.66 in
JB Family Bucket Cylinder – Stroke	1586 mm	62.4 in

Service Refill Capacities

Fuel Tank Capacity	1240 L	327.6 gal
Cooling System	101 L	26.7 gal
Engine Oil	65 L	17.2 gal
Swing Drive (each)	19 L	5 gal
Final Drive (each)	21 L	5.6 gal
Hydraulic System (including tank)	995 L	263 gal
Hydraulic Tank	810 L	214 gal

Dimensions

All dimensions are approximate.

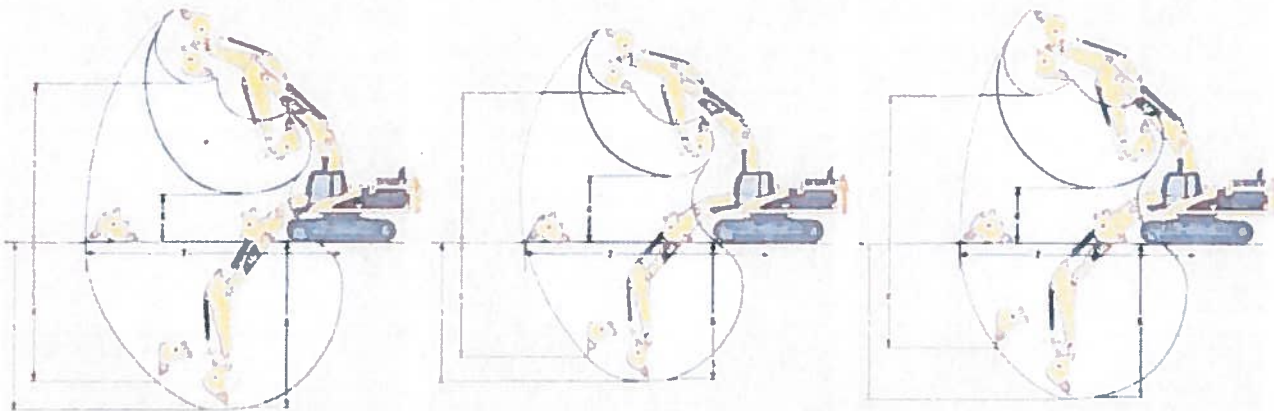


Stick	Reach Boom 10.0 m (32'10")		General Purpose Boom 8.4 m (27'7")				Mass Boom 7.25 m (23'9")	
	5.5 m (18'1")	4.4 m (14'5")	5.5 m (18'1")	4.4 m (14'5")	3.4 m (11'2")	2.92 m (9'7")	3.4 m (11'2")	2.92 m (9'7")
1 Shipping Height								
With boom, stick and bucket	5320 mm (17'5")	4960 mm (16'3")	5870 mm (19'3")	5250 mm (17'3")	5060 mm (16'7")	4890 mm (16'1")	4970 mm (16'4")	4800 mm (15'9")
Without stick and bucket	4020 mm (13'2")	4020 mm (13'2")	3760 mm (12'4")	3760 mm (12'4")	3760 mm (12'4")	3760 mm (12'4")	3870 mm (12'8")	3870 mm (12'8")
2 Shipping Length								
With boom, stick and bucket	16 230 mm (53'3")	16 290 mm (53'5")	14 420 mm (47'4")	14 660 mm (48'1")	14 220 mm (46'8")	14 750 mm (48'5")	13 520 mm (44'4")	13 510 mm (44'4")
Without stick and bucket	14 620 mm (48'0")	14 620 mm (48'0")	12 950 mm (42'6")	12 950 mm (42'6")	12 950 mm (42'6")	12 950 mm (42'6")	11 750 mm (38'7")	11 750 mm (38'7")
3 Tail Swing Radius	4590 mm (15'1")	4590 mm (15'1")	4590 mm (15'1")	4590 mm (15'1")	4590 mm (15'1")	4590 mm (15'1")	4590 mm (15'1")	4590 mm (15'1")
4 Length to Center of Rollers*	5120 mm (16'10")	5120 mm (16'10")	5120 mm (16'10")	5120 mm (16'10")	5120 mm (16'10")	5120 mm (16'10")	5120 mm (16'10")	5120 mm (16'10")
5 Track Length*	6360 mm (20'10")	6360 mm (20'10")	6360 mm (20'10")	6360 mm (20'10")	6360 mm (20'10")	6360 mm (20'10")	6360 mm (20'10")	6360 mm (20'10")
6 Ground Clearance	850 mm (33.5")	850 mm (33.5")	850 mm (33.5")	850 mm (33.5")	850 mm (33.5")	850 mm (33.5")	850 mm (33.5")	850 mm (33.5")
7 Track Gauge (Shipping)**								
For 750 mm (30") shoes	2750 mm (9'0")	2750 mm (9'0")	2750 mm (9'0")	2750 mm (9'0")	2750 mm (9'0")	2750 mm (9'0")	2750 mm (9'0")	2750 mm (9'0")
For 900 mm (36") shoes	2940 mm (9'8")	2940 mm (9'8")	2940 mm (9'8")	2940 mm (9'8")	2940 mm (9'8")	2940 mm (9'8")	2940 mm (9'8")	2940 mm (9'8")
8 Transport Width								
For 750 mm (30") shoes	3500 mm (11'6")	3500 mm (11'6")	3500 mm (11'6")	3500 mm (11'6")	3500 mm (11'6")	3500 mm (11'6")	3500 mm (11'6")	3500 mm (11'6")
For 900 mm (36") shoes	3840 mm (12'7")	3840 mm (12'7")	3840 mm (12'7")	3840 mm (12'7")	3840 mm (12'7")	3840 mm (12'7")	3840 mm (12'7")	3840 mm (12'7")
9 Cab Height	3620 mm (11'11")	3620 mm (11'11")	3620 mm (11'11")	3620 mm (11'11")	3620 mm (11'11")	3620 mm (11'11")	3620 mm (11'11")	3620 mm (11'11")

* Long Undercarriage

** Track Gauge in extended (working) position: 3510 mm (11'6")

Working Ranges



	Reach Boom 10.0 m (32'10")		General Purpose Boom 8.4 m (27'7")			Mass Boom 7.25 m (23'9")		
Stick	5.5 m (18'1")	4.4 m (14'5")	5.5 m (18'1")	4.4 m (14'5")	3.4 m (11'2")	2.92 m (9'7")	3.4 m (11'2")	2.92 m (9'7")
Bucket	GP 2.9 m ³ 3.88 yd ³	GP 2.9 m ³ 3.88 yd ³	GP 3.8 m ³ 5.00 yd ³	GP 3.8 m ³ 5.00 yd ³	HDR 4.6 m ³ 6.00 yd ³	HDR 4.6 m ³ 6.00 yd ³	GP 5.4 m ³ 7.25 yd ³	GP 5.4 m ³ 7.25 yd ³
1 Maximum Digging Depth	11 750 mm (38'7")	10 650 mm (34'11")	10 700 mm (35'1")	9600 mm (31'6")	8480 mm (27'10")	8000 mm (26'3")	7490 mm (24'7")	7020 mm (23'0")
2 Maximum Reach at Ground Level	17 200 mm (56'5")	16 180 mm (53'1")	15 680 mm (51'5")	14 630 mm (48'0")	13 690 mm (44'11")	13 260 mm (43'6")	12 530 mm (41'1")	12 110 mm (39'9")
3 Maximum Loading Height	11 000 mm (36'1")	10 580 mm (34'9")	9780 mm (32'1")	9320 mm (30'7")	9300 mm (30'6")	9120 mm (29'11")	8350 mm (27'5")	8180 mm (26'10")
4 Minimum Loading Height	3370 mm (11'1")	4470 mm (14'8")	2000 mm (6'7")	3100 mm (10'2")	4230 mm (13'11")	4700 mm (15'5")	3350 mm (11'0")	3830 mm (12'7")
5 Maximum Depth Cut for 2240 mm (8') Level Bottom	11 660 mm (38'3")	10 540 mm (34'7")	10 610 mm (34'10")	9490 mm (31'2")	8340 mm (27'4")	7850 mm (25'9")	7360 mm (24'2")	6880 mm (22'7")
6 Maximum Vertical Wall Digging Depth	7800 mm (25'7")	8760 mm (28'9")	7600 mm (24'11")	8280 mm (27'2")	7410 mm (24'4")	7060 mm (23'2")	6340 mm (20'10")	6020 mm (19'9")
Bucket Digging Force (SAE)	288 kN (64,700 lb)	287 kN (64,530 lb)	288 kN (64,770 lb)	287 kN (64,530 lb)	401 kN (90,180 lb)	401 kN (90,180 lb)	382 kN (85,960 lb)	382 kN (85,870 lb)
(ISO)	324 kN (72,930 lb)	323 kN (72,660 lb)	324 kN (72,930 lb)	323 kN (72,660 lb)	461 kN (103,570 lb)	460 kN (103,460 lb)	437 kN (98,140 lb)	436 kN (98,040 lb)
Stick Digging Force (SAE)	206 kN (46,400 lb)	246 kN (55,350 lb)	206 kN (46,400 lb)	246 kN (55,350 lb)	297 kN (66,800 lb)	320 kN (71,870 lb)	292 kN (65,540 lb)	313 kN (70,390 lb)
(ISO)	212 kN (47,610 lb)	254 kN (57,020 lb)	212 kN (47,610 lb)	254 kN (57,020 lb)	308 kN (69,190 lb)	332 kN (74,720 lb)	302 kN (67,870 lb)	325 kN (73,160 lb)

Operating Weight* and Ground Pressure

Configuration	Track							
	900 mm (36") Shoes				750 mm (30") Shoes			
	Operating Weight		Ground Pressure		Operating Weight		Ground Pressure	
	kg	lb	kPa	psi	kg	lb	kPa	psi
10.0 m (32'10") reach boom 1374 mm (54") GP bucket								
R5.5 m (18'1") stick	86 380	190,430	84.8	12.3	85 230	187,890	100.4	14.6
R4.4 m (14'5") stick	86 060	189,740	84.5	12.2	84 910	187,200	100.0	14.5
8.4 m (27'7") general purpose boom 1678 mm (66") GP bucket								
R5.5 m (18'1") stick	85 290	188,040	83.7	12.1	84 140	185,500	99.1	14.4
R4.4 m (14'5") stick	84 980	187,360	83.4	12.1	83 830	184,820	98.7	14.3
8.4 m (27'7") general purpose boom 2260 mm (89") GP bucket								
G3.4 m (11'2") stick	87 840	193,660	86.2	12.5	86 690	191,120	102.1	14.8
G2.92 m (9'7")	87 680	193,300	86.0	12.5	86 530	190,760	101.9	14.8
7.25 m (23'9") mass boom 2260 mm (89") GP bucket								
M3.4 m (11'2") stick	88 090	194,200	86.4	12.5	86 940	191,660	102.4	14.8
M2.92 m (9'7")	87 950	193,910	86.3	12.5	86 800	191,370	102.2	14.8

* Operating weight includes full fuel tank and 75 kg (165 lb) operator

Major Component Weights

	kg	lb
Base machine with counterweight and 900 mm (36") shoes (without front linkage)	67 150	148,000
Two boom cylinders	1656	3700
Counterweight	11 600	25,600
Counterweight Removal Device	734	1600
Boom (includes lines, pins and stick cylinder)		
Reach boom 10.0 m (32'10")	9550	21,100
General Purpose 8.4 m (27'7")	8140	17,900
Mass boom 7.25 m (23'9")	8220	18,100
Stick (includes lines, pins, bucket cylinder and linkage)		
R5.5HB (18'1")	5050	11,100
R4.4HB (14'5")	4740	10,400
G3.4JB (11'2")	4510	9900
G2.92JB (9'7")	4360	9600
M3.4JB (11'2")	5180	11,400
M2.92JB (9'7")	5050	11,100
Track roller frame [includes frame, rollers, idlers, steps, guards, final drive, 900 mm (36") shoes] – each	13 240	29,200

Reach Boom Lift Capacities



Load Point Height



Load at Maximum Reach



Load Radius Over Front



Load Radius Over Side

BOOM – 10 m (32'10")
STICK – 5500 mm (18'1")

BUCKET – 1374 mm (54") GP with HD long tips
SHOES – 900 mm (36") double grouser

UNDERCARRIAGE – Long
HEAVY LIFT – On

Load Point Height	6.0 m/20.0 ft		7.5 m/25.0 ft		9.0 m/30.0 ft		10.5 m/35.0 ft		12.0 m/40.0 ft		13.5 m/45.0 ft		15.0 m/50.0 ft		m ft		
	Front	Side	Front	Side	Front	Side	Front	Side	Front	Side	Front	Side	Front	Side			
13.5 m 45.0 ft															*5200 *11,600	*5200 *11,600	13.10 42.30
12.0 m 40.0 ft									*8040 *15,600	*8040 *15,600					*4920 *10,900	*4920 *10,900	14.31 48.51
10.5 m 35.0 ft									*9730 *20,650	*9730 *20,650					*4780 *10,550	*4780 *10,550	15.24 49.70
9.0 m 30.0 ft									*10 250 *22,350	*10 250 *22,100	*8830 *17,750	7780 16,450			*4740 *10,450	*4740 *10,450	15.94 52.10
7.5 m 25.0 ft								*11 760 *25,500	*11 760 *25,500	*23 250 *21,500	*10 710 *21,600	10 060 16,250			*4780 *10,500	*4780 *10,500	18.44 53.82
6.0 m 20.0 ft					*14 560 *31,450	*14 560 *31,450	*12 670 *27,400	12 600 27,050	*11 300 *24,500	9650 20,650	*10 260 *22,300	7410 15,750	*7880 5600		*4880 *10,750	4420 9800	16.76 54.95
4.5 m 15.0 ft	*25 610 *54,950	*25 610 *54,950	*19 640 *42,300	*19 640 *42,300	*16 050 *34,650	15 600 33,600	*13 860 *29,550	11 870 25,500	*11 950 *25,900	9170 19,600	*10 670 *23,150	7100 15,100	*9250 *17,750	5440 11,600	*5080 *11,200	4140 9150	16.93 55.53
3.0 m 10.0 ft	*25 180 *62,550	*25 180 *58,250	*21 800 *47,000	19 300 42,650	*17 460 *37,700	14 460 31,150	*14 610 *31,550	11 120 23,900	*12 590 *27,250	8870 18,550	*11 070 *23,950	6780 14,350	9210 18,850	5250 11,100	*5360 *11,800	3980 8800	16.94 55.58
1.5 m 5.0 ft	*16 020 *38,400	*16 020 *38,400	*23 390 *50,500	17 780 38,350	*18 600 *40,200	13 460 28,950	*15 400 *33,300	10 440 22,400	*13 120 *28,400	8200 17,550	11 030 23,650	6480 13,750	9010 19,250	5060 10,700	*5730 *12,600	3950 8700	16.80 55.11
Ground Line	*15 580 *36,500	*15 580 *36,500	*24 240 *52,400	16 740 36,050	*19 330 *41,800	12 680 27,250	*15 940 *34,450	9870 21,200	13 190 28,300	7800 16,700	10 750 23,000	6190 13,200	8840 18,900	4900 10,400	*6220 *13,700	4040 8900	16.49 54.11
-1.5 m -5.0 ft	*18 110 *41,900	*18 110 *41,900	*24 360 *52,700	16 120 34,650	*19 580 *42,350	12 140 26,100	16 010 34,400	9480 20,300	12 870 27,600	7500 16,050	10 530 22,600	5990 12,800			*6870 *15,200	4270 9450	16.02 52.53
-3.0 m -10.0 ft	*22 380 *51,500	*22 380 *48,850	*23 800 *51,500	15 830 34,050	*19 310 *41,700	11 850 25,450	15 740 33,800	9210 19,750	12 670 27,200	7310 15,650	10 420 22,350	5890 12,600			*7760 *17,150	4690 10,400	15.36 50.33
-4.5 m -15.0 ft	*28 020 *60,650	22 920 49,200	*22 580 *48,800	15 820 34,000	*18 470 *39,850	11 760 25,300	*15 270 *32,850	9130 19,600	12 630 *27,100	7270 15,800	*10 200 *21,450	5910 12,700			*8160 *17,950	6370 11,900	14.50 47.40
-6.0 m -20.0 ft	*25 250 *54,500	23 350 50,150	*20 620 *44,400	16 030 34,450	*16 960 *36,400	11 880 25,550	*13 940 *29,800	9220 19,850	*11 230 *23,700	7390 15,900					*7620 *16,700	8460 14,450	13.37 43.99

* Indicates that the load is limited by hydraulic capacity rather than tipping capacity. Lift capacity ratings are based on SAE standard J1097. Rated loads do not exceed 87% of hydraulic lifting capacity or 75% of tipping capacity.

BOOM – 10 m (32'10")
STICK – 4400 mm (14'5")

BUCKET – 1374 mm (54") GP with HD long tips
SHOES – 900 mm (36") double grouser

UNDERCARRIAGE – Long
HEAVY LIFT – On

Load Point Height	4.5 m/15.0 ft		6.0 m/20.0 ft		7.5 m/25.0 ft		9.0 m/30.0 ft		10.5 m/35.0 ft		12.0 m/40.0 ft		13.5 m/45.0 ft		m ft		
	Front	Side	Front	Side	Front	Side	Front	Side	Front	Side	Front	Side	Front	Side			
13.5 m 45.0 ft															*7050 *15,700	*7050 *15,700	11.69 37.57
12.0 m 40.0 ft									*11 670 *23,650	*11 670 *23,650					*6670 *14,800	*6670 *14,800	13.07 42.36
10.5 m 35.0 ft									*11 890 *25,950	*11 890 *25,950	*10 330 *19,650	9920 *19,650			*6490 *14,350	*6490 *14,350	14.09 45.90
9.0 m 30.0 ft									*12 300 *26,750	*12 300 *26,750	*11 360 *24,800	9920 21,100			*6430 *14,200	*6370 *14,200	14.85 48.52
7.5 m 25.0 ft							*14 700 *31,800	*14 700 *31,800	*12 980 *28,150	12 760 27,350	*11 730 *25,500	9690 20,650	*10 490 *19,400	7300 15,400	*6480 *14,300	5640 12,550	15.39 50.39
6.0 m 20.0 ft			*24 820 *53,150	*24 820 *53,150	*19 340 *41,600	*19 340 *41,600	*16 030 *34,600	*16 030 *34,550	*13 820 *29,900	12 150 26,100	*12 240 *26,550	9340 18,950	*11 080 *24,050	7150 15,150	*8630 *14,600	5150 11,400	15.75 51.60
4.5 m 15.0 ft			*27 080 *61,600	*27 080 *60,350	*21 550 *46,400	20 010 43,250	*17 410 *37,550	14 970 32,250	*14 700 *31,800	11 480 24,650	*12 800 *27,700	8920 19,100	*11 380 *24,600	6920 14,700	*8880 *15,150	4830 10,700	15.92 52.23
3.0 m 10.0 ft					*23 350 *50,350	18 370 39,650	*18 610 *40,200	13 950 30,050	*15 510 *33,500	10 820 23,250	*13 310 *28,800	8480 18,150	11 230 24,050	8660 14,200	*7230 *15,900	6490 10,300	14.09 52.28
1.5 m 5.0 ft					*24 410 *52,750	17 160 37,000	*19 480 *42,050	13 100 28,200	*18 110 *34,800	10 240 22,000	*13 490 *28,950	8090 17,350	10 970 23,500	6410 13,850	*7710 *17,000	4680 10,250	15.78 51.78
Ground Line			*12 680 *29,950	*12 680 *29,950	*24 670 *53,400	16 440 35,400	*19 840 *42,800	12 500 26,900	16 350 35,150	9790 21,000	13 180 28,250	7780 16,650	10 780 23,100	8220 13,300	*8350 *18,400	4800 10,800	15.45 50.89
-1.5 m -5.0 ft			*17 640 *40,850	*17 640 *40,850	*24 210 *52,450	16 100 34,650	*19 710 *42,800	12 150 26,100	16 040 34,450	9500 20,400	12 940 27,800	7570 16,250	10 650 22,850	6110 13,950	9680 20,050	5130 11,300	14.94 48.99
-3.0 m -10.0 ft	*14 820 *33,850	*14 820 *33,850	*24 180 *55,750	23 180 49,700	*23 110 *50,050	16 050 34,500	*19 020 *41,100	12 010 25,800	*15 780 *34,050	9370 20,150	12 850 27,850	7500 16,100			*9090 *20,000	5700 12,600	14.29 46.80
-4.5 m -15.0 ft	*21 960 *50,000	*21 960 *50,000	*25 660 *55,600	23 560 50,800	*21 340 *46,100	18 220 34,850	*17 700 *38,150	12 080 25,950	*14 640 *31,400	9420 20,250	*11 580 *25,150	7560 16,300			*8580 *18,850	6640 14,750	13.27 43.38
-6.0 m -20.0 ft	*25 980 *58,150	*25 980 *56,150	*22 280 *48,050	*22 280 *48,050	*18 750 *40,300	16 600 35,750	*15 560 *33,300	12 350 26,500	*12 610 *26,850	9680 20,850							

* Indicates that the load is limited by hydraulic capacity rather than tipping capacity. Lift capacity ratings are based on SAE standard J1097. Rated loads do not exceed 87% of hydraulic lifting capacity or 75% of tipping capacity.