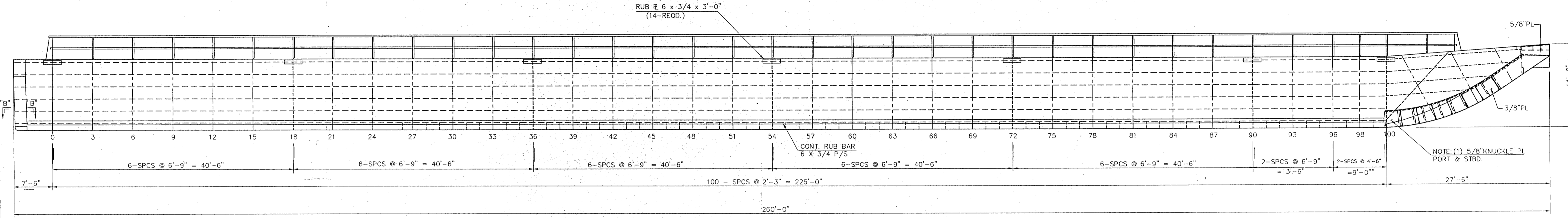


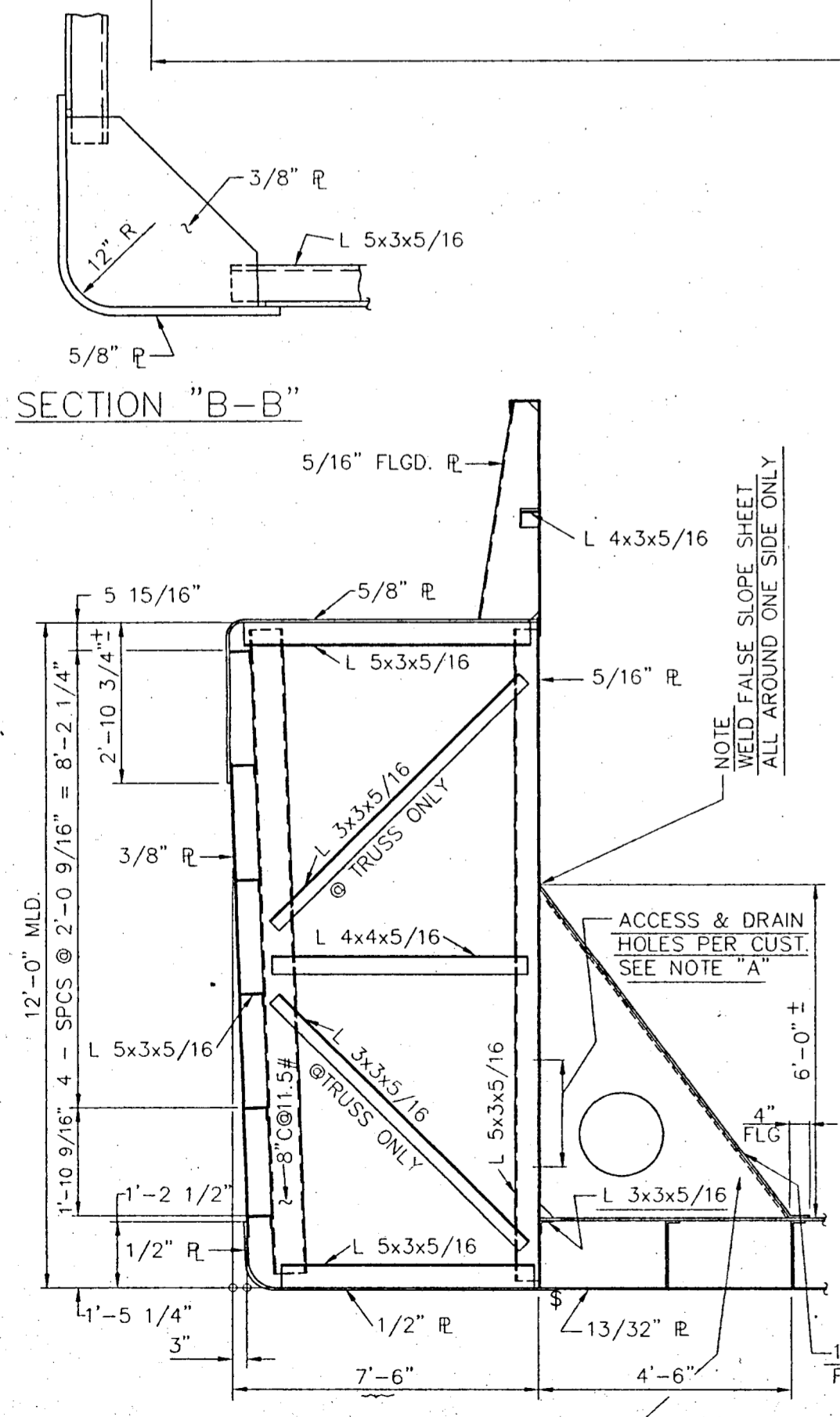
PLAN
1/8" = 1'-0"



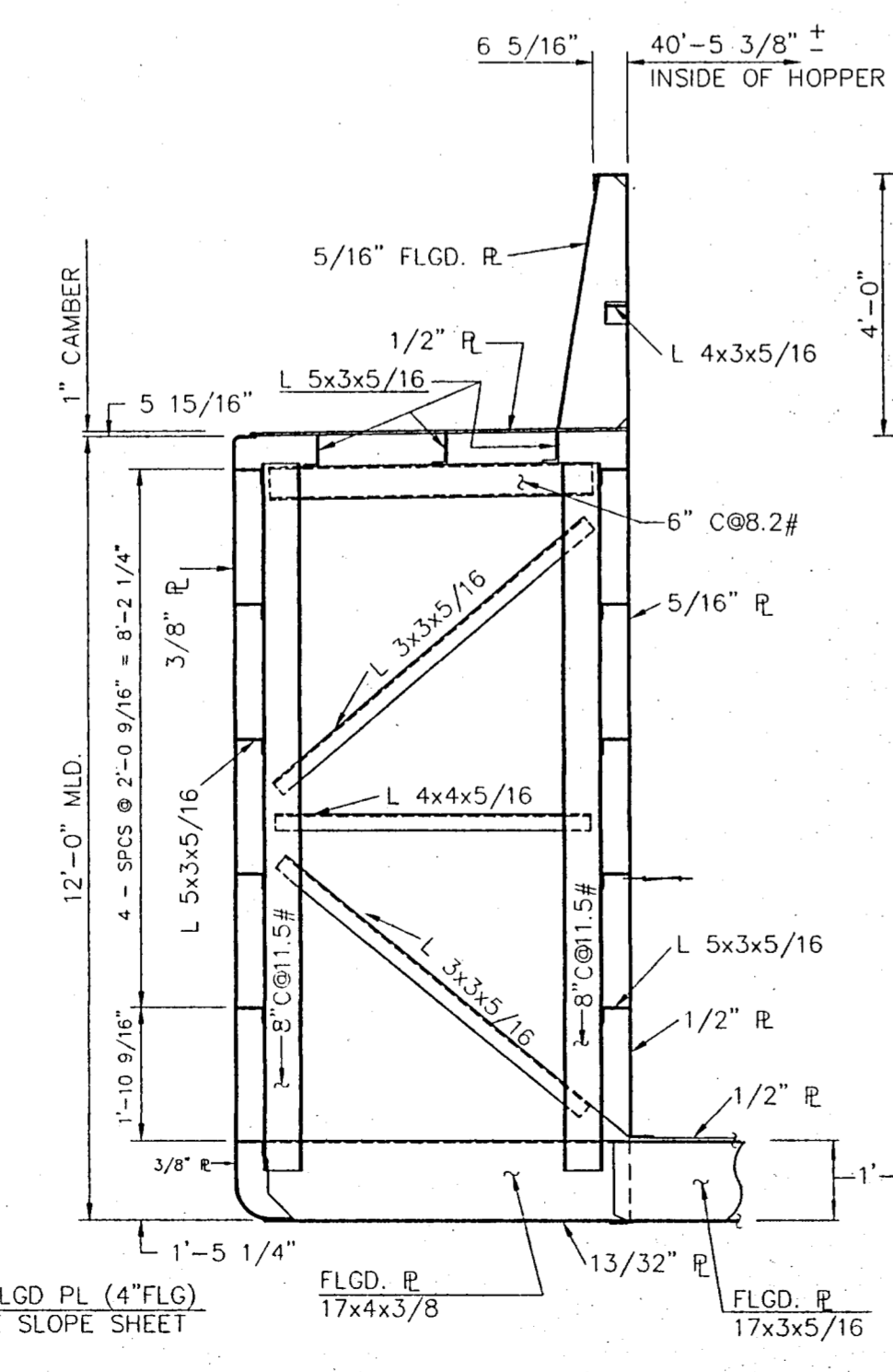
ELEVATION
1/8" = 1'-0"

TOTAL VOLUME OF HOPPER TO TOP OF COAMING: 135,294 CUBIC FT. (APPROX)

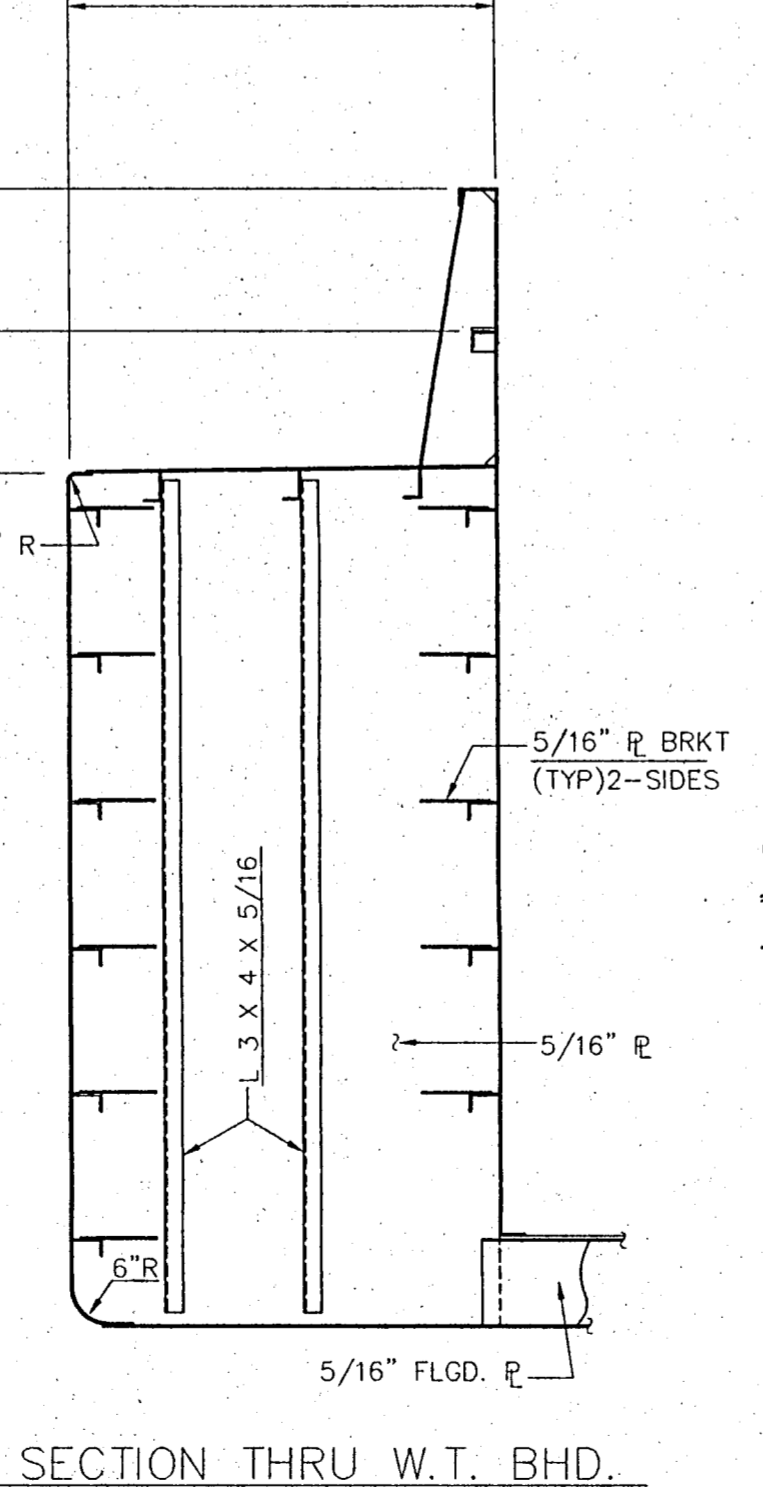
REV 1 CHGD OUTER BOTTOM PL 3/8 TO 13/32 (11-19-92)
REV 2 CHGD 11\"/>



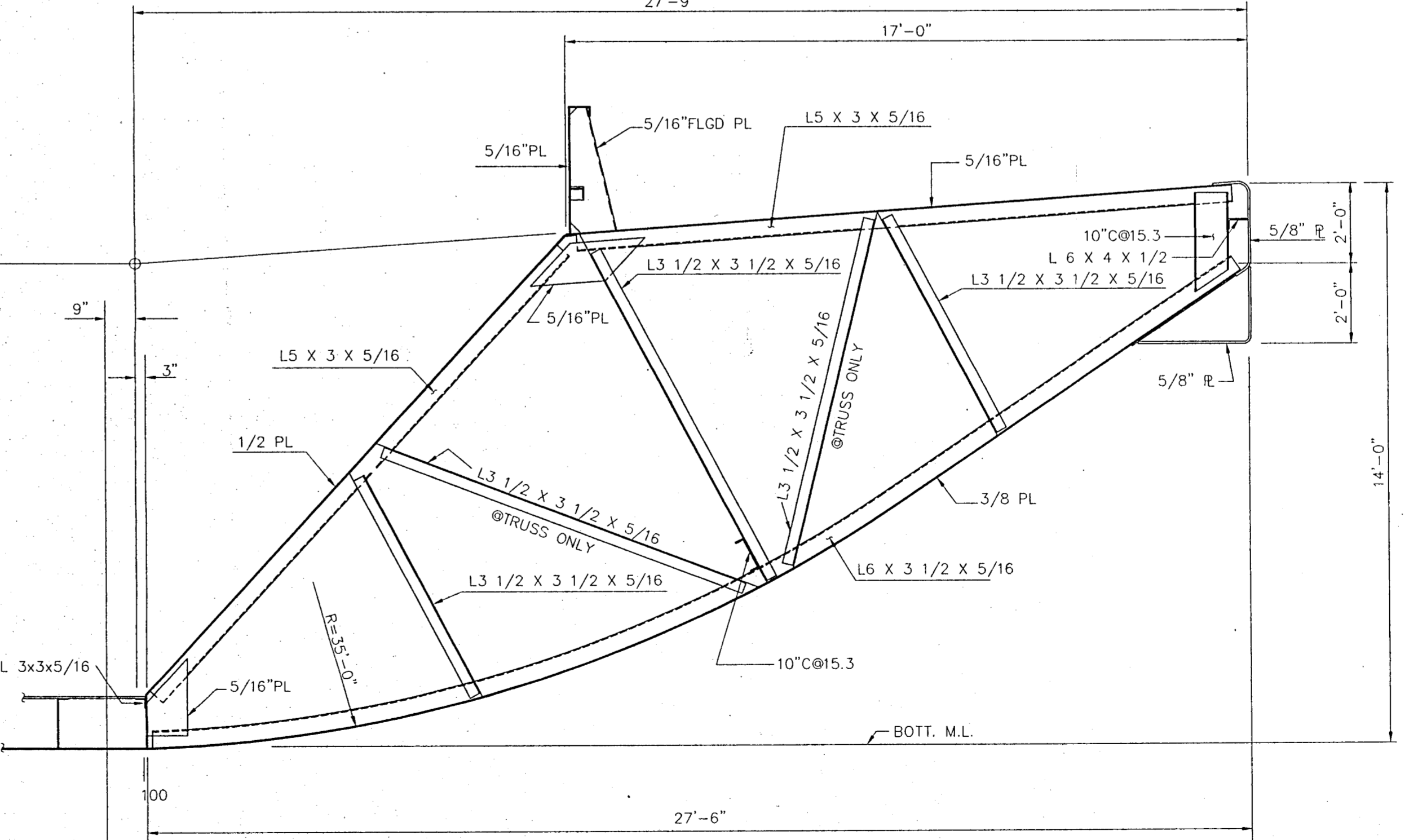
SECTION @ STERN FRAME & TRUSS
3/8" = 1'-0"



SECTION THRU SIDE TRUSS
STBD SIDE LOOKING AFT
3/8" = 1'-0"



SECTION THRU W.T. BHD.
PORT SIDE LOOKING FORWARD
3/8" = 1'-0"



SECTION @ RAKE FRAME & TRUSS
3/8" = 1'-0"

CONTRACT NO.		JOB NO.	
A TRINITY INDUSTRIES CO.			
DRAWN BY EV RP	11-12-92	DATE	
CHECKED BY M.L.	7-26-92	DATE	
APPVD		DATE	
APPVD A B S		DATE	
APPVD U S C G		DATE	
APPVD		DATE	
JOB NO.		HULL NO.	

This drawing design concept and specifications are the property of TRINITY INDUSTRIES, INC. and are furnished on a confidential basis with an expressed understanding that they will not be copied in any manner, used for manufacture, sold, transferred, nor used to the detriment of said firm without written permission. The recipient further agrees not to disclose these contents hereof to any other parties except for those specific purposes for which this drawing was issued.

MID-SOUTH
BULK CARGO *Mst. 900-907*
HOPPER BARGE
260' x 52'-6" x 12'-0" RAKE
GENERAL ARRANGEMENT

SIZE D	DWG NO. 5300-G	REV. 2
SCALE:	SHEET 1 OF	