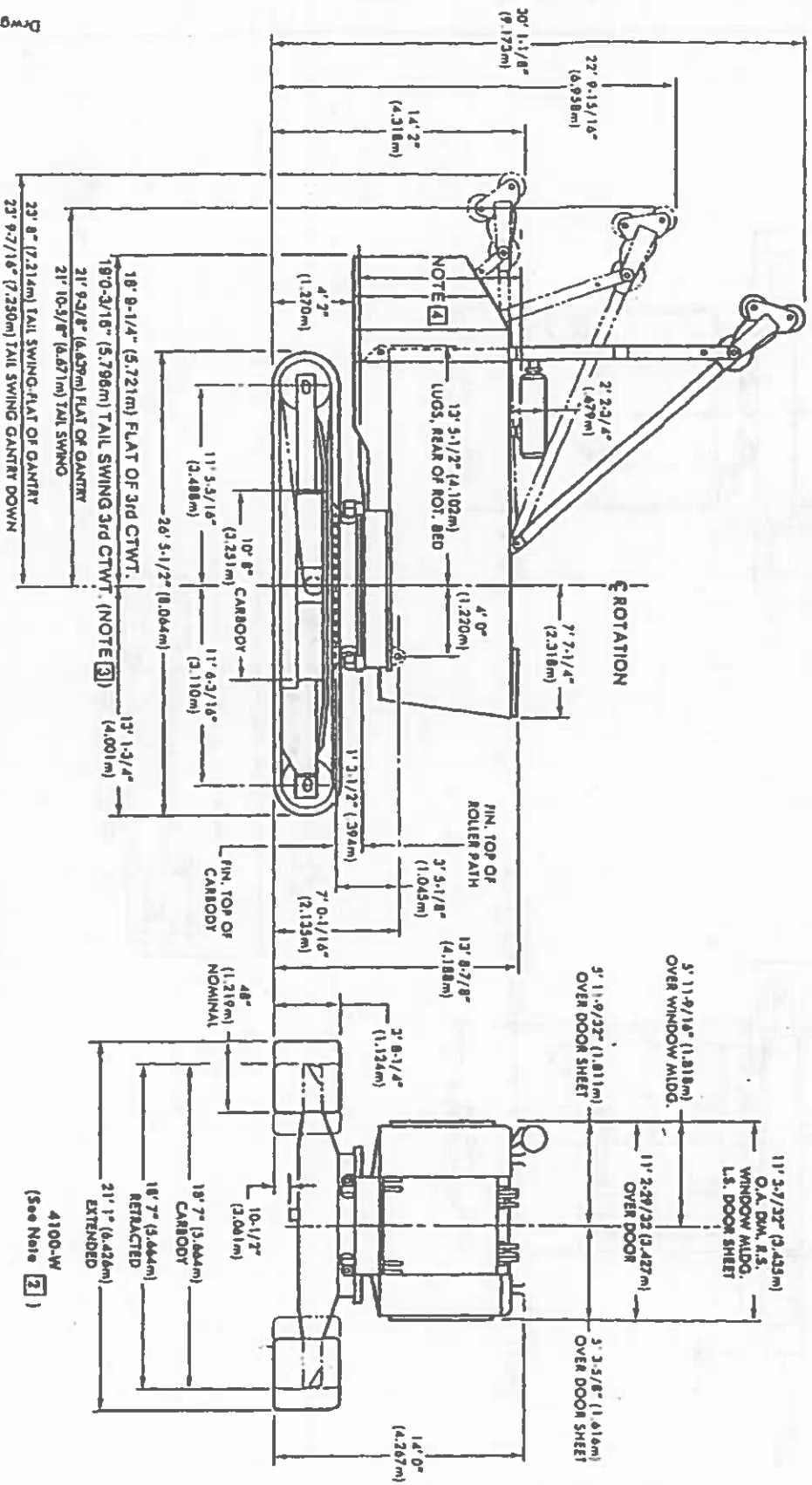


NOTE 1
CRAWLER FRAMES MAY BE REMOVED FOR LOADING, REDUCING ALL HEIGHTS 10-1/2"

NOTE 2
SEE VIEW "A-A" FOR 4100-W SERIES-1 (See page 160299-2) SEE VIEW "B-B" FOR 4100-W SERIES-2 (See page 160299-2)

NOTE 3
20' 11-1/4" TAIL SWING W/CATWALK AROUND REAR OF 3 PIECE CTWT. 4100-W & 4100-W SERIES-1

NOTE 4
9'3-5/16" (2,827mm) BOTTOM OF ROTATING BED SIDE FRAME TO TOP OF TOWER POCKET



SUPERSEDES 93597, 97309 & 97308

160299-1
 1-12-82
 3-5-82
 3-9-82
 3-25-83
 Conf. 7-28-86

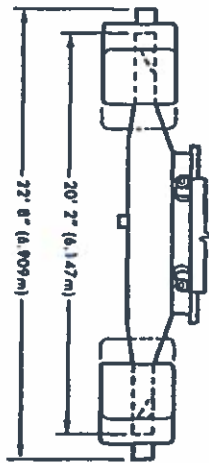
OUTLINE DIMENSIONS (Cont'd on back)

MODELS: 4100-W, 4100-W SERIES-1 & 4100-W SERIES-2

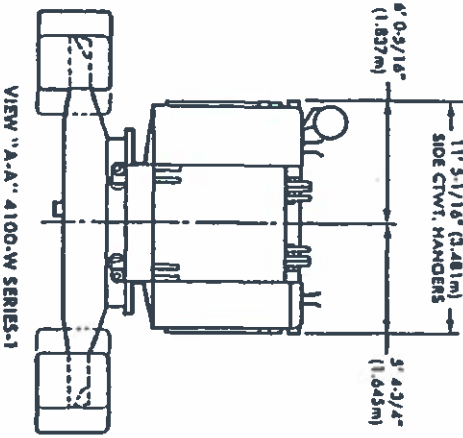
4100-W
 (See Note 2)

OUTLINE DIMENSIONS

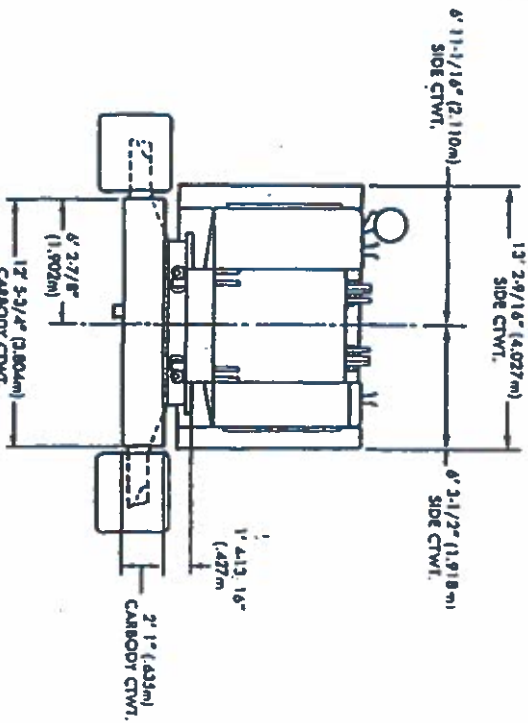
160299-2



CARBODY W/ CRAWLERS MODIFIED FOR RINGER APPLICATION W/ TRAVEL ATTACHMENT



VIEW "A-A" 4100-W SERIES-1



VIEW "B-B" 4100-W SERIES-2

MODELS: 4100-W, 4100-W SERIES-1 & 4100-W SERIES-2

Corr. 7-28-66
 3-25-63
 3-30-62
 3-5-62
 Date 1-12-62
 160299-2