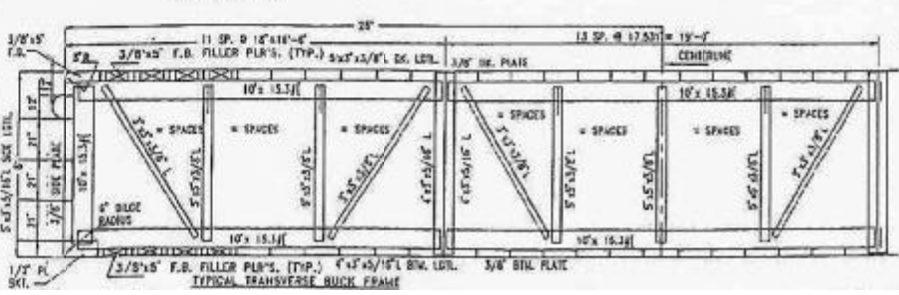


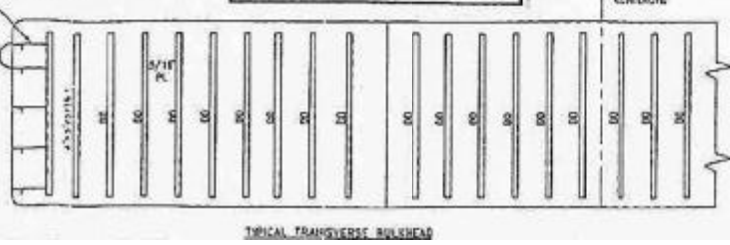
NEW SPUD BARGE FOR SALE

REASONABLE QUOTES FOR OTHER NEW BARGES GIVEN ON REQUEST

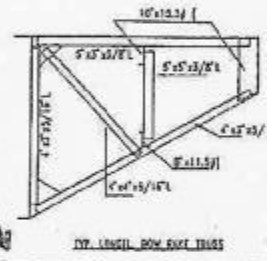
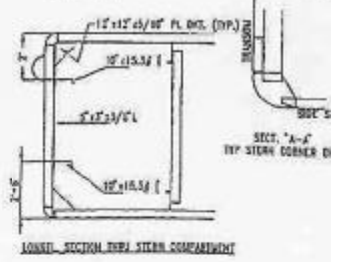
THIS BARGE ALSO AVAILABLE FOR MEDIUM TO LONG TERM RENTAL



ALL LONG'L. BRACKETS TO BE 12\"/>



REVISIONS			
NO.	BY	DT.	DESCRIPTION
09-046			



This strongly built crane barge unit construction in Houston & will delivered 7/1/93. Very competitive price for ~\$20,000 more will have ABS oce load-line. For prices/more info pls c Can also be lengthened 20-3

- GENERAL NOTES
- Barge can be completed for inland service or with ABS ocean paper.
 - Between all top and bottom long's are 1500 lb plates connecting every 10' channel to deck & bottom plating.
 - All hull plating butt welded A-36 steel with ABS paper enclosure.
 - All welding to be in accordance with current ABS rule for inland service.
 - Calender steel blasted & painted with 2-coat coal tar epoxy.
 - All 15 components treated with Sealedin MC-66149 rust inhibitor.
 - Spud wells to be installed of any location lower when at rest, spud, vices, & deck protection also coated on request.
 - Two inspection bar heavily built 2 1/2\"/>

HOUSTON BARGE & BOAT SALES
 1130x52'-8\"/>