

HYDRAULIC DATA

MACHINE DESIGNED TO OPERATE AT THESE MAXIMUM PRESSURE SETTINGS AND FLOW RATES.

FUNCTION	TWO SECTION VALVE			AUX & MAIN - TWO SECT. VALVE			SINGLE SECTION VALVE (OPTION)		SINGLE SECTION VALVE	
	INLET	BOOM HOIST	BOOM TELE.	INLET	MAIN WINCH	AUX. WINCH	INLET	IDEP. WINCH	INLET	SWING
PSI RELIEF SETTING	MAIN 3200	PORT NONE	PORT 2000 RETRACT	MAIN 3200	PORT 2000 LOWER	PORT 2000 LOWER	MAIN NONE	PORT NONE	MAIN 2000	PORT NONE
G.P.M. MAX FLOW	53	53	53	61	61	61	36	36	28	28

OUTRIGGER RELIEF - 2500 PSI - 25 GPM

STEER RELIEF - 2500 PSI - 8GPM - REGULATED FLOW

FLOW RATES TO BE CHECKED AT 2200 ENGINE RPM - NO LOAD - HIGH SPEED

PRESSURES TO BE CHECKED AT 2350 ENGINE RPM - GOVERNED SPEED

HYDRAULIC OIL TEMPERATURE MUST BE BETWEEN PLUS 70°F AND 100°F WHEN SETTING OF ABOVE PRESSURES.

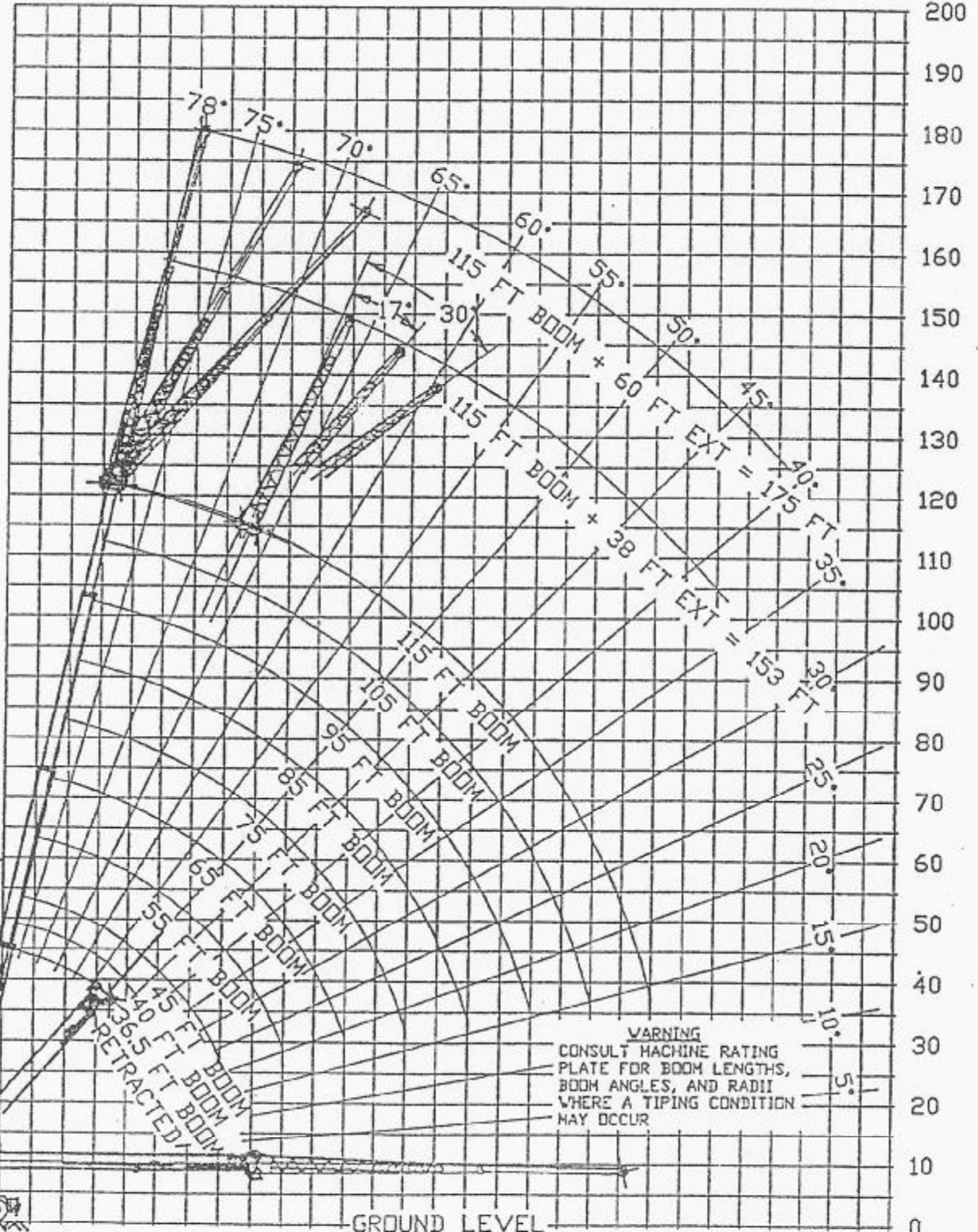
DO NOT HOLD ON RELIEF MORE THAN 10 SECONDS TO AVOID OVERHEATING THE OIL AND HYDRAULIC COMPONENT DAMAGE.

UNAUTHORIZED PRESSURE SETTINGS IN EXCESS OF THE ABOVE VALUES WILL RESULT IN DENIAL OF WARRANTY CLAIMS.

PRESSURE TO BE WITHIN ± 100 P.S.I. - FLOW RATES TO BE WITHIN ± 3%.

RANGE DIAGRAM RT150 115' FULL POWER BOOM

0 10 20 30 40 50 60 70 80 90 100 110 120 130 140



WARNING
 CONSULT MACHINE RATING
 PLATE FOR BOOM LENGTHS,
 BOOM ANGLES, AND RADII
 WHERE A TIPPING CONDITION
 MAY OCCUR

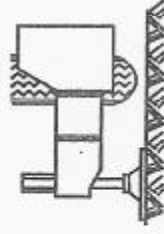
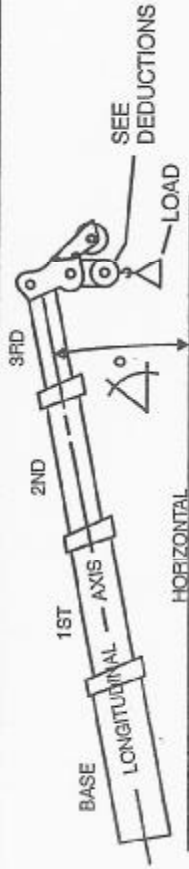
6.50 FT.

C ROTATION

GROUND LEVEL
 HOOK DISTANCE FROM CENTERLINE OF ROTATION

RATED LIFTING CAPACITIES IN POUNDS

36.5-115 FT BOOM ON FULLY EXTENDED OUTRIGGERS
 15200 POUND TOTAL COUNTERWEIGHT
 LOAD MOMENT DEVICE (LMI) CODE # 04



POWERED BOOM LENGTH IN FEET

LOAD RADIUS FT.	36.5FT		40FT		45FT		55FT		65FT		75FT		85FT		95FT		105FT		115FT		LOAD RADIUS FT.	
	LOADED BOOM ANGLE X°	LOAD, LB	LOADED BOOM ANGLE X°	LOAD, LB	LOADED BOOM ANGLE X°	LOAD, LB	LOADED BOOM ANGLE X°	LOAD, LB	LOADED BOOM ANGLE X°	LOAD, LB	LOADED BOOM ANGLE X°	LOAD, LB	LOADED BOOM ANGLE X°	LOAD, LB	LOADED BOOM ANGLE X°	LOAD, LB	LOADED BOOM ANGLE X°	LOAD, LB	LOADED BOOM ANGLE X°	LOAD, LB		
10	68	100000	70	100000	72	88000	75	76600													10	
12	64	100000	67	95000	69	87900	74	76200	76	61000											12	
15	59	88000	62	85700	65	82200	70	76000	74	59000	76	47900									15	
20	48	68000	53	68100	58	68300	65	65000	69	57000	72	44700	75	44100	77	40400					20	
25	36	52800	43	53000	50	55000	59	54200	64	48400	68	40800	72	37300	74	34800	76	31000	78	26000	25	
30			30	42500	40	42500	52	42000	59	40700	64	35300	68	32100	71	29900	73	27700	75	22500	30	
35					28	34000	45	33500	54	32900	60	31000	64	28000	68	26000	70	24600	72	20500	35	
40							36	27100	48	27800	55	27500	60	24800	64	22800	67	21600	70	18000	40	
45							25	21700	41	23500	50	23000	56	22000	61	20400	64	19100	67	16300	45	
50									33	14800	44	14800	44	14800	51	14800	57	14800	61	14800	50	
55									23	13500	38	13500	38	13500	47	13500	53	13500	58	13300	55	
60											32	12500	42	12500	49	12500	54	12500	58	12300	60	
65											22	10700	36	10900	45	11000	45	11000	55	11300	65	
70													30	9200	40	9400	40	9400	47	9600	70	
75													21	7800	35	8000	35	8000	43	8100	75	
80															28	6800	28	6800	38	6900	80	
85															20	5700	20	5700	33	5900	85	
90																			27	5000	90	
95																			19	4200	95	
100																				26	3600	100

ZERO DEGREE BOOM ANGLE LOADS (LB) / RADII (FT.)

0	21000 (31.0)	18000 (34.5)	14000 (39.5)	11000 (49.5)	7900 (59.5)	5100 (69.5)	3300 (79.5)	2200 (89.5)	1500 (99.5)	1000 (109.5)
0	21000 (31.0)	18000 (34.5)	14000 (39.5)	11000 (49.5)	7900 (59.5)	5100 (69.5)	3300 (79.5)	2200 (89.5)	1500 (99.5)	1000 (109.5)

MINIMUM BOOM ANGLE (DEGREES) FOR INDICATED BOOM LENGTH (NO LOAD)

-2

MAXIMUM BOOM LENGTH (FEET) AT -2 DEGREE BOOM ANGLE (NO LOAD)

115